

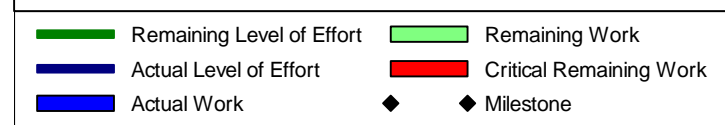
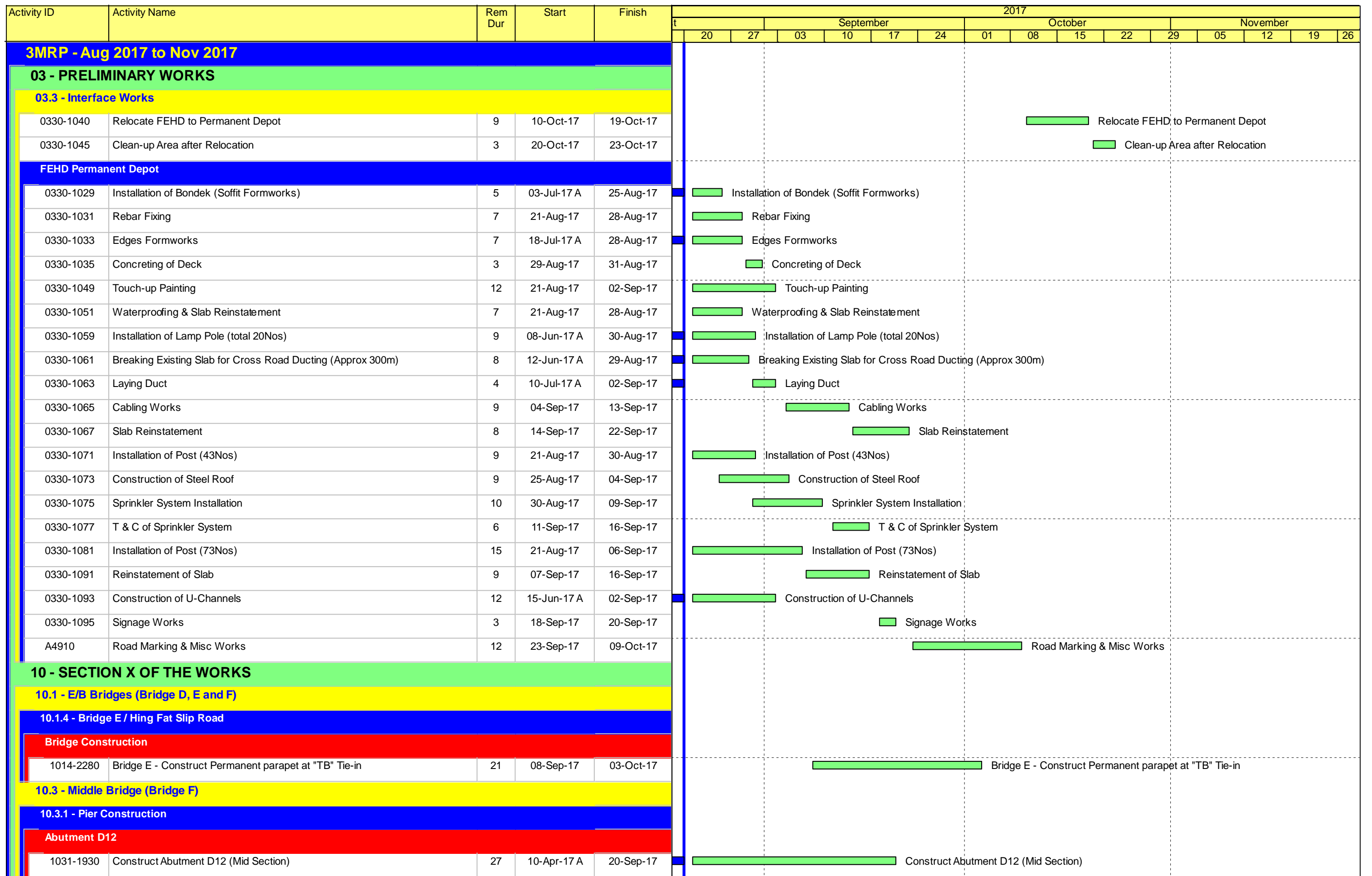


Contract No. HK/2009/01

Wan Chai Development Phase II – Central -Wan Chai Bypass at
Hong Kong Convention and Exhibition Centre

Construction Activities for Three Months Rolling

Construction Activities	June 2017	July 2017	August 2017
Reinstatement of Amenity Area			
Road and Drain Works			



Activity ID	Activity Name	Rem Dur	Start	Finish	2017											
					September						October				November	
					20	27	03	10	17	24	01	08	15	22	29	05
1031-1940	Bearing installation D12	7	21-Sep-17	28-Sep-17	Bearing installation D12											
10.3.2 - Bridge Construction																
Bridge F3B																
1032-2480	Bridge F3B - Construct South Parapet	15	21-Aug-17	06-Sep-17	Bridge F3B - Construct South Parapet											
1032-2500	Bridge F3B - Lingitudinal Stitching	15	21-Aug-17	06-Sep-17	Bridge F3B - Lingitudinal Stitching											
1032-2520	Bridge F3B - Construct Median Barriers	18	07-Sep-17	27-Sep-17	Bridge F3B - Construct Median Barriers											
Bridge F2B																
1032-2700	P39/F4B - T Span Erection (6 pairs)	2	19-Aug-17 A	22-Aug-17	P39/F4B - T Span Erection (6 pairs)											
1032-2720	P40/F5B(MJ Left) - End Span Erection - Hanging Segments	2	23-Aug-17	24-Aug-17	P40/F5B(MJ Left) - End Span Erection - Hanging Segments											
1032-2740	P40/F5B(MJ Left) - End Span Erection - Erect Segments	1	25-Aug-17	25-Aug-17	P40/F5B(MJ Left) - End Span Erection - Erect Segments											
1032-2760	P40/F5B(MJ Left) - End Span Erection - Stitching	2	26-Aug-17	28-Aug-17	P40/F5B(MJ Left) - End Span Erection - Stitching											
1032-2780	P40/F5B(MJ Left) - End Span Erection - Formwork Fixing for and Grouting for Bearing	2	26-Aug-17	28-Aug-17	P40/F5B(MJ Left) - End Span Erection - Formwork Fixing for and Grouting for Bearing											
1032-2800	P40/F5B(MJ Left) - End Span Erection - Prestress Span Tendons	2	29-Aug-17	30-Aug-17	P40/F5B(MJ Left) - End Span Erection - Prestress Span Tendons											
1032-2820	P40/F5B(MJ Left) - End Span Erection - Remove Hanger Bar & Hanger Beam & Stitching Formwork	1	31-Aug-17	31-Aug-17	P40/F5B(MJ Left) - End Span Erection - Remove Hanger Bar & Hanger Beam & Stitching Formwork											
1032-2840	LG-A Launching - Deactivate the MS at F5B/Pier40 and Engage FL at P38/F4B	2	01-Sep-17	02-Sep-17	LG-A Launching - Deactivate the MS at F5B/Pier40 and Engage FL at P38/F4B											
1032-2860	P38/F4B - Install Pier Segment - Place Pier Segment	2	04-Sep-17	05-Sep-17	P38/F4B - Install Pier Segment - Place Pier Segment											
1032-2880	P38/F4B - Install Pier Segment - Adjust Segment Level and Location	3	06-Sep-17	08-Sep-17	P38/F4B - Install Pier Segment - Adjust Segment Level and Location											
1032-2900	P38/F4B - Install Pier Segment - Install the Tie & Packing System	1	09-Sep-17	09-Sep-17	P38/F4B - Install Pier Segment - Install the Tie & Packing System											
1032-2920	P38/F4B - Launch LG -A and Engage FL at F2B/Pier37	1	11-Sep-17	11-Sep-17	P38/F4B - Launch LG -A and Engage FL at F2B/Pier37											
1032-2940	P38/F4B(MJ Right) - End Span Erection - Hanging Segments	2	12-Sep-17	13-Sep-17	P38/F4B(MJ Right) - End Span Erection - Hanging Segments											
1032-2960	P38/F4B(MJ Right) - End Span Erection - Erect Segments	1	14-Sep-17	14-Sep-17	P38/F4B(MJ Right) - End Span Erection - Erect Segments											
1032-2980	P38/F4B(MJ Right) - End Span Erection - Stitching	2	15-Sep-17	16-Sep-17	P38/F4B(MJ Right) - End Span Erection - Stitching											
1032-3000	P38/F4B(MJ Right) - End Span Erection - Formwork Fixing for and Grouting for Bearing	2	15-Sep-17	16-Sep-17	P38/F4B(MJ Right) - End Span Erection - Formwork Fixing for and Grouting for Bearing											
1032-3020	P38/F4B(MJ Right) - End Span Erection - Prestress Span Tendons	2	18-Sep-17	19-Sep-17	P38/F4B(MJ Right) - End Span Erection - Prestress Span Tendons											
1032-3040	P38/F4B(MJ Right) - End Span Erection - Remove Hanger Bar & Hanger Beam & Stitching Formwork	1	20-Sep-17	20-Sep-17	P38/F4B(MJ Right) - End Span Erection - Remove Hanger Bar & Hanger Beam & Stitching Formwork											
1032-3060	Prestress Extenral Tendon of Bridge F2B	12	21-Sep-17	06-Oct-17	Prestress Extenral Tendon of Bridge F2B											
1032-3080	Bridge F2B - Longitudinal Stitching	12	07-Oct-17	20-Oct-17	Bridge F2B - Longitudinal Stitching											
1032-3100	Bridge F2B - Construct Median Barriers	18	21-Oct-17	11-Nov-17	Bridge F2B - Construct Median Barriers											
Bridge F1B2																
1032-1000	Relignment LG - A for Launching at Bridge F1B2	4	21-Sep-17	25-Sep-17	Relignment LG - A for Launching at Bridge F1B2											
1032-3160	P38/F4B - Install Pier Segment - Place Pier Segment	1	26-Sep-17	26-Sep-17	P38/F4B - Install Pier Segment - Place Pier Segment											
1032-3180	P38/F4B - Install Pier Segment - Adjust Segment Level and Location	2	27-Sep-17	28-Sep-17	P38/F4B - Install Pier Segment - Adjust Segment Level and Location											
1032-3200	P38/F4B - Install Pier Segment - Grouting the Bearing Upper Plinth	3	29-Sep-17	03-Oct-17	P38/F4B - Install Pier Segment - Grouting the Bearing Upper Plinth											
1032-3220	P38/F4B - Install Pier Segment - Stressing Nailing	2	04-Oct-17	06-Oct-17	P38/F4B - Install Pier Segment - Stressing Nailing											

Remaining Level of Effort Remaining Work
 Actual Level of Effort Critical Remaining Work
 Actual Work Milestone

Contract HY/2009/19
Three Months Rolling Programme (20.Aug.2017 to 19.Nov.2017)

Activity ID	Activity Name	Rem Dur	Start	Finish	2017																
					September						October				November						
					20	27	03	10	17	24	01	08	15	22	29	05	12	19	26		
1032-3240	P38/F4B - Install MS at Pier 38 and Engage FL at P37/F2B	2	07-Oct-17	09-Oct-17								■ P38/F4B - Install MS at Pier 38 and Engage FL at P37/F2B									
1032-3260	P37/F2B - Install Pier Segment - Place Pier Segment	1	10-Oct-17	10-Oct-17								■ P37/F2B - Install Pier Segment - Place Pier Segment									
1032-3280	P37/F2B - Install Pier Segment - Adjust Segment Level and Location	2	11-Oct-17	12-Oct-17								■ P37/F2B - Install Pier Segment - Adjust Segment Level and Location									
1032-3300	P37/F2B - Install Pier Segment - Grouting the Bearing Upper Plinth	3	13-Oct-17	16-Oct-17								■ P37/F2B - Install Pier Segment - Grouting the Bearing Upper Plinth									
1032-3320	P37/F2B - Install Pier Segment - Stressing Nailing	2	17-Oct-17	18-Oct-17								■ P37/F2B - Install Pier Segment - Stressing Nailing									
1032-3340	P37/F2B - Install MS at F1B2/Pier37 and Engage FL at F1B/Pier36	2	19-Oct-17	20-Oct-17								■ P37/F2B - Install MS at F1B2/Pier37 and Engage FL at F1B/Pier36									
1032-3360	P37/F2B - T Span Erection (5 pairs)	4	21-Oct-17	25-Oct-17								■ P37/F2B - T Span Erection (5 pairs)									
1032-3380	P38/F4B(MJ Left) - End Span Erection - Hanging Segments	3	26-Oct-17	30-Oct-17								■ P38/F4B(MJ Left) - End Span Erection - Hanging Segments									
1032-3400	P38/F4B(MJ Left) - End Span Erection - Erect Segments	1	31-Oct-17	31-Oct-17								■ P38/F4B(MJ Left) - End Span Erection - Erect Segments									
1032-3420	P38/F4B(MJ Left) - End Span Erection - Stitching	2	01-Nov-17	02-Nov-17								■ P38/F4B(MJ Left) - End Span Erection - Stitching									
1032-3440	P38/F4B(MJ Left) - End Span Erection - Formwork Fixing for and Grouting for Bearing	2	01-Nov-17	02-Nov-17								■ P38/F4B(MJ Left) - End Span Erection - Formwork Fixing for and Grouting for Bearing									
1032-3460	P38/F4B(MJ Left) - End Span Erection - Prestress Span Tendons	2	03-Nov-17	04-Nov-17								■ P38/F4B(MJ Left) - End Span Erection - Prestress Span Tendons									
1032-3480	P38/F4B(MJ Left) - End Span Erection - Remove Hanger Bar & Hanger Beam & Stitching Formwork	1	06-Nov-17	06-Nov-17								■ P38/F4B(MJ Left) - End Span Erection - Remove Hanger Bar & Hanger Beam & Stitching Formwork									
1032-3500	P36/F1B - Install Pier Segment - Place Pier Segment	1	24-Oct-17	24-Oct-17								■ P36/F1B - Install Pier Segment - Place Pier Segment									
1032-3520	P36/F1B - Install Pier Segment - Adjust Segment Level and Location	2	25-Oct-17	26-Oct-17								■ P36/F1B - Install Pier Segment - Adjust Segment Level and Location									
1032-3540	P36/F1B - Install Pier Segment - Grouting the Bearing Upper Plinth	3	27-Oct-17	31-Oct-17								■ P36/F1B - Install Pier Segment - Grouting the Bearing Upper Plinth									
1032-3560	P36/F1B - Install Pier Segment - Stressing Nailing	2	01-Nov-17	02-Nov-17								■ P36/F1B - Install Pier Segment - Stressing Nailing									
1032-3580	P36/F1B - Install MS at F1B/Pier36 and Engage FL at D12	2	03-Nov-17	04-Nov-17								■ P36/F1B - Install MS at F1B/Pier36 and Engage FL at D12									
1032-3600	P36/F1B - T Span Erection (6 pairs)	4	07-Nov-17	10-Nov-17								■ P36/F1B - T Span Erection (6 pairs)									
1032-3620	Abut. D12 - Install Pier Segment - Place Pier Segment	2	11-Nov-17	13-Nov-17								■ Abut. D12 - Install Pier Segment - Place Pier Segment									
1032-3640	Abut. D12 - Install Pier Segment - Adjust Segment Level and Location	3	14-Nov-17	16-Nov-17								■ Abut. D12 - Install Pier Segment - Adjust Segment Level and Location									
1032-3660	Abut. D12 - Install Pier Segment - Install the Tie & Packing System	2	17-Nov-17	18-Nov-17								■ Abut. D12 - Install Pier Segment - Install the Tie & Packing System									
1032-3680	Abut. D12 - Install MS at D12	1	20-Nov-17	20-Nov-17								■ Abut. D12 - Install MS at D12									
Bridge F1B1																					
1032-1200	P36/F1A - T Span Erection (6 pairs)	3	21-Aug-17	23-Aug-17								■ P36/F1A - T Span Erection (6 pairs)									
1032-1220	Abut. D12 - Install MS at D12	1	24-Aug-17	24-Aug-17								■ Abut. D12 - Install MS at D12									
1032-1240	Abut. D12 (MJ Right) - End Span Erection - Hanging Segments	2	25-Aug-17	26-Aug-17								■ Abut. D12 (MJ Right) - End Span Erection - Hanging Segments									
1032-1260	Abut. D12 (MJ Right) - End Span Erection - Erect Segments	2	28-Aug-17	29-Aug-17								■ Abut. D12 (MJ Right) - End Span Erection - Erect Segments									
1032-1280	Abut. D12 (MJ Right) - End Span Erection - Stitching	2	30-Aug-17	31-Aug-17								■ Abut. D12 (MJ Right) - End Span Erection - Stitching									
1032-1300	Abut. D12 (MJ Right) - End Span Erection - Formwork Fixing for and Grouting for Bearing	2	01-Sep-17	02-Sep-17								■ Abut. D12 (MJ Right) - End Span Erection - Formwork Fixing for and Grouting for Bearing									
1032-1320	Abut. D12 (MJ Right) - End Span Erection - Prestress Span Tendons	2	01-Sep-17	02-Sep-17								■ Abut. D12 (MJ Right) - End Span Erection - Prestress Span Tendons									
1032-1340	Abut. D12 (MJ Right) - End Span Erection - Remove Hanger Bar & Hanger Beam & Stitching Formwork	1	04-Sep-17	04-Sep-17								■ Abut. D12 (MJ Right) - End Span Erection - Remove Hanger Bar & Hanger Beam & Stitching Formwork									
1032-1360	P37/F2A - Install Pier Segment - Place Pier Segment	1	05-Sep-17	05-Sep-17								■ P37/F2A - Install Pier Segment - Place Pier Segment									
1032-1380	P37/F2A - Install Pier Segment - Adjust Segment Level and Location	2	06-Sep-17	07-Sep-17								■ P37/F2A - Install Pier Segment - Adjust Segment Level and Location									
1032-1400	P37/F2A - Install Pier Segment - Grouting the Bearing Upper Plinth	1	08-Sep-17	08-Sep-17								■ P37/F2A - Install Pier Segment - Grouting the Bearing Upper Plinth									

■ Remaining Level of Effort ■ Remaining Work
■ Actual Level of Effort ■ Critical Remaining Work
■ Actual Work ◆ ◆ Milestone

Contract HY/2009/19
Three Months Rolling Programme (20.Aug.2017 to 19.Nov.2017)

Activity ID	Activity Name	Rem Dur	Start	Finish	2017												
					September			October			November						
					20	27	03	10	17	24	01	08	15	22	29	05	12
1032-1420	P37/F2A - Install Pier Segment - Stressing Nailing	2	09-Sep-17	11-Sep-17	P37/F2A - Install Pier Segment - Stressing Nailing												
1032-1440	P37/F2A - Install MS at F1B2/Pier37 and Engage RL at F1B/Pier36	1	12-Sep-17	12-Sep-17	P37/F2A - Install MS at F1B2/Pier37 and Engage RL at F1B/Pier36												
1032-1460	P37/F2A - T Span Erection (5 pairs)	3	13-Sep-17	15-Sep-17	P37/F2A - T Span Erection (5 pairs)												
1032-1480	P37/F2A-P36/F1A - Mid-span Stitching	2	16-Sep-17	18-Sep-17	P37/F2A-P36/F1A - Mid-span Stitching												
1032-1500	P37/F2A-P36/F1A - Prestress Span Tendons	3	19-Sep-17	21-Sep-17	P37/F2A-P36/F1A - Prestress Span Tendons												
1032-1520	P38/F3A - Install Pier Segment - Place Pier Segment	1	07-Nov-17	07-Nov-17	P38/F3A - Install Pier Segment - Place Pier Segment												
1032-1540	P38/F3A - Install Pier Segment - Adjust Segment Level and Location	2	08-Nov-17	09-Nov-17	P38/F3A - Install Pier Segment - Adjust Segment Level and Location												
1032-1560	P38/F3A - Install Pier Segment - Grouting the Bearing Upper Plinth	2	10-Nov-17	11-Nov-17	P38/F3A - Install Pier Segment - Grouting the Bearing Upper Plinth												
1032-1580	P38/F3A - Install Pier Segment - Stressing Nailing	1	13-Nov-17	13-Nov-17	P38/F3A - Install Pier Segment - Stressing Nailing												
1032-1600	P38/F3A - Install MS at Pier 38 and Engage FL at P37/F2A	2	14-Nov-17	15-Nov-17	P38/F3A - Install MS at Pier 38 and Engage FL at P37/F2A												
1032-1620	P38/F3A(MJ Left) - End Span Erection - Hanging Segments	1	16-Nov-17	16-Nov-17	P38/F3A(MJ Left) - End Span Erection - Hanging Segments												
1032-1640	P38/F3A(MJ Left) - End Span Erection - Erect Segments	2	16-Nov-17	17-Nov-17	P38/F3A(MJ Left) - End Span Erection - Erect Segments												
1032-1660	P38/F3A(MJ Left) - End Span Erection - Stitching	1	18-Nov-17	18-Nov-17	P38/F3A(MJ Left) - End Span Erection - Stitching												
1032-1680	P38/F3A(MJ Left) - End Span Erection - Formwork Fixing for and Grouting for Bearing	1	20-Nov-17	20-Nov-17	P38/F3A(MJ Left) - End Span Erection - Formwork Fixing for and Grouting for Bearing												
Bridge F5																	
1032-3940	Bridge F5 Deck Construction	2	26-Jun-17 A	22-Aug-17	Bridge F5 Deck Construction												
1032-3960	Bridge F5 Median Barriers	30	23-Aug-17	26-Sep-17	Bridge F5 Median Barriers												
All Middle Bridge F (Common)																	
1032-4350	TCSS/LV Ducts at Pier 50-51	14	21-Aug-17	05-Sep-17	TCSS/LV Ducts at Pier 50-51												
1032-4353	TCSS/LV Ducts at Pier 51-52	14	06-Sep-17	21-Sep-17	TCSS/LV Ducts at Pier 51-52												
1032-4354	TCSS/LV Ducts at Pier 52-53	14	22-Sep-17	10-Oct-17	TCSS/LV Ducts at Pier 52-53												
1032-4355	TCSS/LV Ducts at Pier 53-54	14	11-Oct-17	26-Oct-17	TCSS/LV Ducts at Pier 53-54												
1032-4356	TCSS/LV Ducts at Pier 55-56	14	27-Oct-17	13-Nov-17	TCSS/LV Ducts at Pier 55-56												
10.4 - Bridge Deck Demolition																	
10.4.3 - Existing E/B Bridge																	
10412-1700	Demolish Dolphin+Pile Cap & Reconstruct Pier 33 Pile Cap	24	01-Aug-17 A	16-Sep-17	Demolish Dolphin+Pile Cap & Reconstruct Pier 33 Pile Cap												
10412-1730	Demolish Dolphin+Pile Cap & Reconstruct Pier 32 Pile Cap	18	12-Jul-17 A	09-Sep-17	Demolish Dolphin+Pile Cap & Reconstruct Pier 32 Pile Cap												
10.6 - Tunnel Approach Ramp																	
10.6.1 - Approach Ramp (Excluding Portion IIB)																	
Piling Works																	
1061-3820	Pre Bored H-Pile > Pile Ramp - BN11 A (Low Head Rm)	6	10-Aug-17 A	26-Aug-17	Pre Bored H-Pile > Pile Ramp - BN11 A (Low Head Rm)												
1061-3840	Pre Bored H-Pile > Pile Ramp - BN11 A - (H-Pile + Grouting)	1	28-Aug-17	28-Aug-17	Pre Bored H-Pile > Pile Ramp - BN11 A - (H-Pile + Grouting)												
1061-3860	Pre Bored H-Pile > Pile Ramp - BN11 B (LHR)	7	28-Aug-17	04-Sep-17	Pre Bored H-Pile > Pile Ramp - BN11 B (LHR)												
1061-3880	Pre Bored H-Pile > Pile Ramp - BN11 B - (H-Pile + Grouting)	1	05-Sep-17	05-Sep-17	Pre Bored H-Pile > Pile Ramp - BN11 B - (H-Pile + Grouting)												
1061-3900	Pre Bored H-Pile > Pile Ramp - BN12 A (LHR)	7	05-Sep-17	12-Sep-17	Pre Bored H-Pile > Pile Ramp - BN12 A (LHR)												

- Remaining Level of Effort
- Actual Level of Effort
- Critical Remaining Work
- Actual Work
- Remaining Work
- Critical Remaining Work
- ◆ Milestone

Contract HY/2009/19
Three Months Rolling Programme (20.Aug.2017 to 19.Nov.2017)

Activity ID	Activity Name	Rem Dur	Start	Finish	2017											
					September						October				November	
					20	27	03	10	17	24	01	08	15	22	29	05
1061-3920	Pre Bored H-Pile > Pile Ramp - BN12 A - (H-Pile + Grouting)	1	13-Sep-17	13-Sep-17	■ Pre Bored H-Pile > Pile Ramp - BN12 A - (H-Pile + Grouting)											
1061-3940	Pre Bored H-Pile > Pile Ramp - BN12 B (LHR)	7	13-Sep-17	20-Sep-17	■ Pre Bored H-Pile > Pile Ramp - BN12 B (LHR)											
1061-3960	Pre Bored H-Pile > Pile Ramp - BN12 B - (H-Pile + Grouting)	1	21-Sep-17	21-Sep-17	■ Pre Bored H-Pile > Pile Ramp - BN12 B - (H-Pile + Grouting)											
1061-3980	Pre Bored H-Pile > Pile Ramp - BN13 A (LHR)	7	21-Sep-17	28-Sep-17	■ Pre Bored H-Pile > Pile Ramp - BN13 A (LHR)											
1061-4000	Pre Bored H-Pile > Pile Ramp - BN13 A - (H-Pile + Grouting)	1	29-Sep-17	29-Sep-17	■ Pre Bored H-Pile > Pile Ramp - BN13 A - (H-Pile + Grouting)											
1061-4120	Pre Bored H-Pile > Pile Ramp - BN01 B - (H-Pile + Grouting)	1	21-Aug-17	21-Aug-17	■ Pre Bored H-Pile > Pile Ramp - BN01 B - (H-Pile + Grouting)											
1061-4240	Pre Bored H-Pile > Pile Ramp - BN06 A - (H-Pile + Grouting)	1	21-Aug-17	21-Aug-17	■ Pre Bored H-Pile > Pile Ramp - BN06 A - (H-Pile + Grouting)											
Excavation & ELS Works																
1061-5220	Ch 5234 - 5285 > Install 2nd Layer of Strut & Waling	10	17-Aug-17 A	31-Aug-17	■ Ch 5234 - 5285 > Install 2nd Layer of Strut & Waling											
1061-5240	Ch 5234 - 5285 > Excav to FEL	12	01-Sep-17	14-Sep-17	■ Ch 5234 - 5285 > Excav to FEL											
Structure Works																
1061-5560	Bay 6 - Ch 5262 - 5277 > Base Slab - Blinding Layer	1	15-Sep-17	15-Sep-17	■ Bay 6 - Ch 5262 - 5277 > Base Slab - Blinding Layer											
1061-5580	Bay 6 - Ch 5262 - 5277 > Base Slab - Water Proofing Membrane	2	16-Sep-17	18-Sep-17	■ Bay 6 - Ch 5262 - 5277 > Base Slab - Water Proofing Membrane											
1061-5600	Bay 6 - Ch 5262 - 5277 > Base Slab - Rebar Fixing	6	19-Sep-17	25-Sep-17	■ Bay 6 - Ch 5262 - 5277 > Base Slab - Rebar Fixing											
1061-5620	Bay 6 - Ch 5262 - 5277 > Base Slab - Erect Formworks	4	26-Sep-17	29-Sep-17	■ Bay 6 - Ch 5262 - 5277 > Base Slab - Erect Formworks											
1061-5640	Bay 6 - Ch 5262 - 5277 > Base Slab - Concreting	1	30-Sep-17	30-Sep-17	■ Bay 6 - Ch 5262 - 5277 > Base Slab - Concreting											
1061-5660	Bay 5 - Ch 5277 - 5292 > Base Slab - Blinding Layer (WF1)	1	03-Oct-17	03-Oct-17	■ Bay 5 - Ch 5277 - 5292 > Base Slab - Blinding Layer (WF1)											
1061-5680	Bay 5 - Ch 5277 - 5292 > Base Slab - Base Slab - Water Proofing Membrane	3	04-Oct-17	07-Oct-17	■ Bay 5 - Ch 5277 - 5292 > Base Slab - Base Slab - Water Proofing Membrane											
1061-5700	Bay 5 - Ch 5277 - 5292 > Base Slab - Rebar Fixing (WF1)	6	09-Oct-17	14-Oct-17	■ Bay 5 - Ch 5277 - 5292 > Base Slab - Rebar Fixing (WF1)											
1061-5720	Bay 5 - Ch 5277 - 5292 > Base Slab - Erect Formworks (WF1)	3	16-Oct-17	18-Oct-17	■ Bay 5 - Ch 5277 - 5292 > Base Slab - Erect Formworks (WF1)											
1061-5740	Bay 5 - Ch 5277 - 5292 > Base Slab - Concreting (WF1)	1	19-Oct-17	19-Oct-17	■ Bay 5 - Ch 5277 - 5292 > Base Slab - Concreting (WF1)											
1061-5760	Bay 4 - Ch 5292 - 5303 > Base Slab - Blinding Layer (WF1)	1	20-Oct-17	20-Oct-17	■ Bay 4 - Ch 5292 - 5303 > Base Slab - Blinding Layer (WF1)											
1061-5780	Bay 4 - Ch 5292 - 5303 > Base Slab - Base Slab - Water Proofing Membrane	3	21-Oct-17	24-Oct-17	■ Bay 4 - Ch 5292 - 5303 > Base Slab - Base Slab - Water Proofing Membrane											
1061-5800	Bay 4 - Ch 5292 - 5303 > Base Slab - Rebar Fixing (WF1)	5	25-Oct-17	31-Oct-17	■ Bay 4 - Ch 5292 - 5303 > Base Slab - Rebar Fixing (WF1)											
1061-5820	Bay 4 - Ch 5292 - 5303 > Base Slab - Erect Formworks (WF1)	3	01-Nov-17	03-Nov-17	■ Bay 4 - Ch 5292 - 5303 > Base Slab - Erect Formworks (WF1)											
1061-5840	Bay 4 - Ch 5292 - 5303 > Base Slab - Concreting (WF1)	1	04-Nov-17	04-Nov-17	■ Bay 4 - Ch 5292 - 5303 > Base Slab - Concreting (WF1)											
1061-5860	Bay 7 - Ch 5247 - 5262 > Base Slab - Blinding Layer (WF2)	1	03-Oct-17	03-Oct-17	■ Bay 7 - Ch 5247 - 5262 > Base Slab - Blinding Layer (WF2)											
1061-5880	Bay 7 - Ch 5247 - 5262 > Base Slab - Base Slab - Water Proofing Membrane	3	04-Oct-17	07-Oct-17	■ Bay 7 - Ch 5247 - 5262 > Base Slab - Base Slab - Water Proofing Membrane											
1061-5900	Bay 7 - Ch 5247 - 5262 > Base Slab - Rebar Fixing (WF2)	6	09-Oct-17	14-Oct-17	■ Bay 7 - Ch 5247 - 5262 > Base Slab - Rebar Fixing (WF2)											
1061-5920	Bay 7 - Ch 5247 - 5262 > Base Slab - Erect Formworks (WF2)	3	16-Oct-17	18-Oct-17	■ Bay 7 - Ch 5247 - 5262 > Base Slab - Erect Formworks (WF2)											
1061-5940	Bay 7 - Ch 5247 - 5262 > Base Slab - Concreting (WF2)	1	19-Oct-17	19-Oct-17	■ Bay 7 - Ch 5247 - 5262 > Base Slab - Concreting (WF2)											
1061-5960	Bay 8 - Ch 5232 - 5247 > Base Slab - Blinding Layer (WF2)	1	31-Oct-17	31-Oct-17	■ Bay 8 - Ch 5232 - 5247 > Base Slab - Blinding Layer (WF2)											
1061-5980	Bay 8 - Ch 5232 - 5247 > Base Slab - Base Slab - Water Proofing Membrane	3	01-Nov-17	03-Nov-17	■ Bay 8 - Ch 5232 - 5247 > Base Slab - Base Slab - Water Proofing Membrane											
1061-6000	Bay 8 - Ch 5232 - 5247 > Base Slab - Rebar Fixing (WF2)	5	04-Nov-17	09-Nov-17	■ Bay 8 - Ch 5232 - 5247 > Base Slab - Rebar Fixing (WF2)											
1061-6020	Bay 8 - Ch 5232 - 5247 > Base Slab - Erect Formworks (WF2)	3	10-Nov-17	13-Nov-17	■ Bay 8 - Ch 5232 - 5247 > Base Slab - Erect Formworks (WF2)											

■ Remaining Level of Effort ■ Remaining Work
■ Actual Level of Effort ■ Critical Remaining Work
■ Actual Work ◆ Milestone

Contract HY/2009/19
Three Months Rolling Programme (20.Aug.2017 to 19.Nov.2017)

Activity ID	Activity Name	Rem Dur	Start	Finish	2017														
					September				October				November						
					20	27	03	10	17	24	01	08	15	22	29	05	12	19	26
1061-6040	Bay 8- Ch 5232 - 5247 > Base Slab - Concreting (WF2)	1	14-Nov-17	14-Nov-17															
1061-6060	Bay 5 & 6 > Side Wall - Lower Portion - Instal Waterproofing Membrane	1	20-Oct-17	20-Oct-17															
1061-6080	Bay 5 & 6 > Side Wall - Lower Portion - Rebar Fixing	2	21-Oct-17	23-Oct-17															
1061-6100	Bay 5 & 6 > Side Wall - Lower Portion - Erect Formworks	2	24-Oct-17	25-Oct-17															
1061-6120	Bay 5 & 6 > Side Wall - Lower Portion - Concreting	1	26-Oct-17	26-Oct-17															
1061-6140	Bay 5 & 6 > Side Wall - Lower Portion - Backfill Behind Side Wall	3	27-Oct-17	31-Oct-17															
1061-6160	Bay 5 & 6 > Side Wall - Lower Portion - Cast Temp Concrete Slab (3days curing)	4	01-Nov-17	04-Nov-17															
1061-6180	Bay 5 & 6 > Side Wall - Lower Portion - Remove 1st & 2nd Struts & Waling	6	06-Nov-17	11-Nov-17															
1061-6200	Bay 5 & 6 > Side Wall - Upper Portion - Erect Scaffolding & Working Platform	4	13-Nov-17	16-Nov-17															
Retaining Walls & Trough Structure B,C & D																			
1061-6860	Construct Retaining Wall E Pile Cap (7 nos)	24	06-Mar-17 A	16-Sep-17															
1061-6880	Construct Retaining Wall E1 (Ch 5332 - 5371)	18	18-Sep-17	10-Oct-17															
1061-6900	Construct Retaining Wall E2 (Ch 5371 - 5398)	18	11-Oct-17	01-Nov-17															
1061-6920	Construct Retaining Wall E3 (Ch 5398 - 5419)	18	18-Sep-17	10-Oct-17															
1061-6940	Construct Retaining Wall F1 (Ch 5330 - 5371)	18	18-Sep-17	10-Oct-17															
1061-6960	Construct Retaining Wall F2 (Ch 5371 - 5398)	18	11-Oct-17	01-Nov-17															
1061-6980	Construct Retaining Wall F3 (Ch 5398 - 5419)	18	18-Sep-17	10-Oct-17															
Landscape Deck																			
1061-7260	Ch 5331 - 5419 > Construct LD Middle Pile Cap (7nos)	21	04-Oct-17	30-Oct-17															
10.6.2 - Approach Ramp (Within Portion IIB)																			
ELS																			
A1005	Preboring Works and Sheet Pile at North Wall - Rig 3	21	11-Jul-17 A	13-Sep-17															
A1006	Preboring Works and Sheet Pile at North Wall - Rig 4	21	17-Jul-17 A	13-Sep-17															
A1008	King Post	25	08-Aug-17 A	18-Sep-17															
A1010	Dewatering System and Instrumentation installation	28	21-Aug-17	21-Sep-17															
A1020	Pumping Test	6	30-Sep-17	09-Oct-17															
A1030	Excavation Part 1 (1500m ³ / day)	9	10-Oct-17	19-Oct-17															
A1040	ELS Installation and Excavation Part 2 (1200m ³ / day)	12	20-Oct-17	03-Nov-17															
A1050	ELS Installation and Excavation Part 3 (750m ³ / day)	8	04-Nov-17	13-Nov-17															
A1060	ELS Installation and Excavation Part 4 (750m ³ / day)	17	14-Nov-17	02-Dec-17															

	Remaining Level of Effort		Remaining Work
	Actual Level of Effort		Critical Remaining Work
	Actual Work		Milestone

Contract HY/2009/19
Three Months Rolling Programme (20.Aug.2017 to 19.Nov.2017)

China State Construction Engineering (Hong Kong) Ltd.

Contract No. HY/2009/15 - Central Wan Chai By Pass - Tunnel (Causeway Bay)

Activity Name	Start	Finish	2017		
			Jul	Aug	Sep
Hung Hing Road Resurfacing	1/6/2017	30/9/2017			
Defect works inside tunnel	1/4/2017	30/9/2017			

Activity ID	Activity Name	On Dur	Rem Dur	Scheduled/ Actual Start	Scheduled/ Actual Finish	Total Float	Calendar	2017																	
								July				August				September				October					
								25	02	09	16	23	30	06	13	20	27	03	10	17	24	01	08	15	22
Hung Hing Road Flyover - Bay 1 (West Side) CH 3709-3732																									
S11-HH-4140	Reinstatement of HHR Flyover - Concreting for the base slab of west abutment	1	1	05-Aug-17	05-Aug-17	-759	HK Working Day	Reinstatement of HHR Flyover - Concreting for the base slab of west abutment, Reinstatement of HHR																	
S11-HH-4142	Reinstatement of HHR Flyover - CJ Treatment	2	2	07-Aug-17	09-Aug-17	-759	HK Working Day	Reinstatement of HHR Flyover - CJ Treatment, Reinstatement of HHR Flyover - CJ Treatment																	
S11-HH-4145	Reinstatement of HHR Flyover - Erect falsework and external formwork for the walls of west abutment	6	6	09-Aug-17	15-Aug-17	-759	HK Working Day	Reinstatement of HHR Flyover - Erect falsework and external formwork for the walls of w																	
S11-HH-4150	Reinstatement of HHR Flyover - Fix Re-bars for the walls of west abutment	6	6	16-Aug-17	23-Aug-17	-759	HK Working Day	Reinstatement of HHR Flyover - Fix Re-bars for the walls of west abutment, Re																	
S11-HH-4152	Reinstatement of HHR Flyover - Erect internal formwork for the walls of west abutment	7	7	24-Aug-17	31-Aug-17	-759	HK Working Day	Reinstatement of HHR Flyover - Erect internal formwork for the walls																	
S11-HH-4155	Reinstatement of HHR Flyover - Concreting for the walls of west abutment	1	1	31-Aug-17	01-Sep-17	-759	HK Working Day	Reinstatement of HHR Flyover - Concreting for the walls of west ab																	
S11-HH-4159	Reinstatement of HHR Flyover - Formwork stripping for the walls of west abutment	2	2	02-Sep-17	04-Sep-17	-759	HK Working Day	Reinstatement of HHR Flyover - Formwork stripping for the wa																	
S11-HH-4165	Reinstatement of HHR Flyover - Filling inside structure with granular fill (1.63m thick @ 0.15m/layer)	17	17	04-Sep-17	21-Sep-17	-759	HK Working Day	Reinstatement of HHR Flyover - Filling																	
Hung Hing Road Flyover - Bay 2 (Middle) CH 3732-3747																									
S11-HH-5049	Reinstatement of HHR Flyover - Kicker	3	0	07-Jun-17 A	27-Jun-17 A		HK Working Day	Reinstatement of HHR Flyover - Kicker																	
S11-HH-5050	Reinstatement of HHR Flyover - Concreting for the base slab of bay 2 of HHR	1	0	28-Jun-17 A	28-Jun-17 A		HK Working Day	Reinstatement of HHR Flyover - Concreting for the base slab of bay 2 of HHR																	
S11-HH-5060	Reinstatement of HHR Flyover - CJ Treatment	1	0	29-Jun-17 A	30-Jun-17 A		HK Working Day	Reinstatement of HHR Flyover - CJ Treatment																	
S11-HH-5070	Reinstatement of HHR Flyover - Erect Working Platform and external formwork for bay 2 of HHR	7	0	03-Jul-17 A	08-Jul-17 A		HK Working Day	Reinstatement of HHR Flyover - Erect Working Platform and external formwork for bay 2 of HHR																	
S11-HH-5071	Reinstatement of HHR Flyover - Fix re-bars for the walls of bay 2 of HHR	7	0	05-Jul-17 A	11-Jul-17 A		HK Working Day	Reinstatement of HHR Flyover - Fix re-bars for the walls of bay 2 of HHR																	
S11-HH-5072	Reinstatement of HHR Flyover - Erect external Working Platform, falsework, formwork & install holding bolt	12	15	12-Jul-17 A	03-Aug-17	-736	HK Working Day	Reinstatement of HHR Flyover - Erect external Working Platform, falsework, formwork & install holding bolt																	
S11-HH-5073	Reinstatement of HHR Flyover - Concreting for the walls of bay 2 of HHR	1	1	04-Aug-17	04-Aug-17	-736	HK Working Day	Reinstatement of HHR Flyover - Concreting for the walls of bay 2 of HHR, Reinstatement of HHR Flyover																	
S11-HH-5075	Reinstatement of HHR Flyover - Formwork stripping for the walls of bay 2 of HHR	4	4	05-Aug-17	10-Aug-17	-736	HK Working Day	Reinstatement of HHR Flyover - Formwork stripping for the walls of bay 2 of HHR, Reinstatement of																	
S11-HH-5077	Reinstatement of HHR Flyover - Filling inside structure with granular fill (approx. 470 m3) and install sub-soil drain	12	12	10-Aug-17	22-Aug-17	-736	HK Working Day	Reinstatement of HHR Flyover - Filling inside structure with granular fill (approx																	
S11-HH-5078	Reinstatement of HHR Flyover - Excavate for selected filter material (42m3)	3	3	23-Aug-17	26-Aug-17	-736	HK Working Day	Reinstatement of HHR Flyover - Excavate for selected filter material (42m3)																	
S11-HH-5079	Reinstatement of HHR Flyover - Backfill selected filter material (42m3)	4	4	26-Aug-17	31-Aug-17	-736	HK Working Day	Reinstatement of HHR Flyover - Backfill selected filter material (42m3)																	
S11-HH-5080	Reinstatement of HHR Flyover - Lay blinding layer for the transition slab	1	1	31-Aug-17	31-Aug-17	-671	HK Working Day	Reinstatement of HHR Flyover - Lay blinding layer for the transition																	
S11-HH-5085	Reinstatement of HHR Flyover - Erect formwork & prepare CJ for the transition slab	4	4	01-Sep-17	06-Sep-17	-671	HK Working Day	Reinstatement of HHR Flyover - Erect formwork & prepare C																	
S11-HH-5086	Reinstatement of HHR Flyover - Fix Re-bars for the transition slab	4	4	07-Sep-17	11-Sep-17	-671	HK Working Day	Reinstatement of HHR Flyover - Fix Re-bars for the tr																	
S11-HH-5087	Reinstatement of HHR Flyover - Concreting for the transition slab	1	1	11-Sep-17	12-Sep-17	-671	HK Working Day	Reinstatement of HHR Flyover - Concreting for the t																	
Hung Hing Road Flyover - Bay 3 (East Side) CH 3747-3770																									
S11-HH-5159	Reinstatement of HHR Flyover - Erect frm for the base slab of east abutment	4	0	01-Jun-17 A	04-Jul-17 A		HK Working Day	Reinstatement of HHR Flyover - Erect frm for the base slab of east abutment																	
S11-HH-5160	Reinstatement of HHR Flyover - Fix Re-bars for the base slab of east abutment	7	0	03-Jul-17 A	15-Jul-17 A		HK Working Day	Reinstatement of HHR Flyover - Fix Re-bars for the base slab of east abutment																	
S11-HH-5163	Reinstatement of HHR Flyover - Kicker	4	0	16-Jul-17 A	19-Jul-17 A		HK Working Day	Reinstatement of HHR Flyover - Kicker																	
S11-HH-5165	Reinstatement of HHR Flyover - Concreting for the base slab of east abutment	1	1	20-Jul-17	20-Jul-17	-733	HK Working Day	Reinstatement of HHR Flyover - Concreting for the base slab of east abutment, Reinstatement of HHR Flyover - Concreting																	
S11-HH-5170	Reinstatement of HHR Flyover - CJ Treatment	1	1	21-Jul-17	21-Jul-17	-733	HK Working Day	Reinstatement of HHR Flyover - CJ Treatment, Reinstatement of HHR Flyover - CJ Treatment																	
S11-HH-5172	Reinstatement of HHR Flyover - Erect falsework and external formwork for the walls of east abutment	10	10	22-Jul-17	01-Aug-17	-733	HK Working Day	Reinstatement of HHR Flyover - Erect falsework and external formwork for the walls of east abutment, Reins																	
S11-HH-5173	Reinstatement of HHR Flyover - Fix Re-bars for the walls of east abutment	6	6	01-Aug-17	07-Aug-17	-733	HK Working Day	Reinstatement of HHR Flyover - Fix Re-bars for the walls of east abutment, Reinstatement of HHR																	
S11-HH-5174	Reinstatement of HHR Flyover - Concreting for the walls of east abutment	1	1	07-Aug-17	08-Aug-17	-733	HK Working Day	Reinstatement of HHR Flyover - Concreting for the walls of east abutment, Reinstatement of HHR																	
S11-HH-5176	Reinstatement of HHR Flyover - Formwork stripping and CJ Treatment for the walls of east abutment	2	2	09-Aug-17	11-Aug-17	-733	HK Working Day	Reinstatement of HHR Flyover - Formwork stripping and CJ Treatment for the walls of east ab																	
S11-HH-5178	Reinstatement of HHR Flyover - Temporary Protection for UU	4	4	11-Aug-17	15-Aug-17	-733	HK Working Day	Reinstatement of HHR Flyover - Temporary Protection for UU, Reinstatement of HHR Fly																	
S11-HH-5180	Reinstatement of HHR Flyover - Erect external falsework and formwork including bridge deck upstand	12	12	16-Aug-17	28-Aug-17	-733	HK Working Day	Reinstatement of HHR Flyover - Erect external falsework and formwork																	
S11-HH-5182	Reinstatement of HHR Flyover - Fix Re-bars, including end wall	12	12	29-Aug-17	11-Sep-17	-733	HK Working Day	Reinstatement of HHR Flyover - Fix Re-bars, including																	
S11-HH-5184	Reinstatement of HHR Flyover - Install drainage pipe inside wall between gullies	3	3	12-Sep-17	14-Sep-17	-733	HK Working Day	Reinstatement of HHR Flyover - Install drainage p																	
S11-HH-5186	Reinstatement of HHR Flyover - Formwork for the end wall and internal wall of east abutment	7	7	15-Sep-17	22-Sep-17	-733	HK Working Day	Reinstatement of HHR Flyover - Form																	
S11-HH-5188	Reinstatement of HHR Flyover - Erect falsework for the top slab	6	6	23-Sep-17	30-Sep-17	-733	HK Working Day	Reinstatement of HHR Flyov																	
S11-HH-5190	Reinstatement of HHR Flyover - Erect formwork for the top slab	4	4	30-Sep-17	06-Oct-17	-733	HK Working Day	Reinstatement of HHR																	
S11-HH-5192	Reinstatement of HHR Flyover - Fix Re-bars for the top slab	4	4	07-Oct-17	12-Oct-17	-733	HK Working Day	Reinstatement																	
S11-HH-5194	Reinstatement of HHR Flyover - Install holding down bolt	3	3	12-Oct-17	14-Oct-17	-733	HK Working Day	Reinstat																	
S11-HH-5196	Reinstatement of HHR Flyover - Formwork for the bridge deck upstand	4	4	16-Oct-17	20-Oct-17	-733	HK Working Day	Reinst																	
Hung Hing Road Flyover - Reinstatement of Utilities and Drainage																									
S11-HH-4052	Reinstatement of HHR Flyover - Cover up all utilities and complete paving blocks along footpath	45	45	06-Oct-17	23-Nov-17	-733	HK Working Day	Reinstatement of HHR Flyover - Cover up all utilities and complete paving blocks along footpath																	
S11-HH-4062	Reinstatement of HHR Flyover - Construct manhole MH1 & MH2	7	7	01-Sep-17	08-Sep-17	-736	HK Working Day	Reinstatement of HHR Flyover - Construct manhole MH1																	
S11-HH-4064	Reinstatement of HHR Flyover - Lay drainage works G2 to MH2, including testing	7	7	04-Oct-17	12-Oct-17	-759	HK Working Day	Reinstatement																	
S11-HH-4066	Reinstatement of HHR Flyover - Lay drainage works MH2 to MH1, including testing	7	7	04-Oct-17	12-Oct-17	747	HK Working Day	Reinstatement																	
S11-HH-4068	Reinstatement of HHR Flyover - Lay drainage works G1 to MH1, including testing	7	7	04-Oct-17	12-Oct-17	747	HK Working Day	Reinstatement																	
S11-HH-4069	Reinstatement of HHR Flyover - Manhole Final Works after acceptance of pipes	2	2	13-Oct-17	14-Oct-17	-759	HK Working Day	Reinstatement																	
S11-HH-4070	Reinstatement of HHR Flyover - Backfill on top of drainage pipe at Bay 1 & 2	5	5	13-Oct-17	18-Oct-17	747	HK Working Day	Reinstatement																	
S11-HH-4071	Reinstatement of HHR Flyover - Laying drainage pipe (300mm dia. pipe - MH2 to MH20), 10 m long including testing	7	7	07-Oct-17	14-Oct-17	709	HK Working Day	Reinstatement																	
S11-HH-4072	Reinstatement of HHR Flyover - Backfill on top of drainage pipe outside Bay 1 & 2 - Layer 1	2	2	14-Oct-17	17-Oct-17	709	HK Working Day	Reinstatement																	
S11-HH-4073	Reinstatement of HHR Flyover - SRT for drainage pipe - Layer 1	10	10	18-Oct-17	30-Oct-17	709	HK Working Day	Reinstatement																	

- ◆ Milestone
- ◆ Critical Milestones
- █ Current Works
- █ Critical Works
- █ Remaining Level of Effort

CHUN WO - CRGL
JOINT VENTURE
CEDD CONTRACT NO. HK/2009/02
WD II - Central Wanchai Bypass at Wan Chai East (Contract 2)
3-MONTH ROLLING PROGRAMME (data date 20-Jul-17)

Date	Revision	Checked	Approved

Activity ID	Activity Name	On Dur	Rem Dur	Scheduled/Actual Start	Scheduled/Actual Finish	Total Float	Calendar	2017																
								July				August				September				October				
								25	02	09	16	23	30	06	13	20	27	03	10	17	24	01	08	15
Hung Hing Road Flyover - Road Works and Street Furniture																								
S11-HH-4078	Reinstatement of HHR Flyover - Trimming road formation	10	10	22-Sep-17	04-Oct-17	-759	HK Working Day															Reinstatement of HHR		
S11-HH-4079	Reinstatement of HHR Flyover - Road Kerb (390m @ 30m/day)	15	15	14-Oct-17	01-Nov-17	-759	HK Working Day																	
S11-HH-4092	Reinstatement of HHR Flyover - Install steel parapet (390m @8m/day)	55	55	21-Sep-17	21-Nov-17	-734	HK Working Day																	
Reinstatement of Box Culvert O																								
S11-BCO-2015	Box Culvert O Reinstatement - Site Investigation, Design and Approval of Box Culvert O (Bay 13 - Bay 14)	114	114	27-Jul-17	25-Nov-17	-337	HK Working Day																	
Wan Shiing Street Sewerage Works																								
S11-SW-1081	UU detection and excavate trial pit TP-HHR-05 at Wan Shiing Street	4	0	17-Jun-17 A	18-Jul-17 A		HK Working Day															UU detection and excavate trial pit TP-HHR-05 at Wan Shiing Street		
S11-SW-1082	Liaison with UU companies	7	7	19-Jul-17 A	26-Jul-17	-264	HK Working Day															Liaison with UU companies, Liaison with UU companies		
S11-SW-1083	Trench excavation and shoring installation at Wan Shiing Street	12	12	27-Jul-17	08-Aug-17	-264	HK Working Day															Trench excavation and shoring installation at Wan Shiing Street, Trench excavation and shoring installation		
S11-SW-1084	Divert existing DN500 from MH 17 to MH 19 and removal of D300 pvc pipe at Wan Shiing Street	6	6	08-Aug-17	14-Aug-17	-264	HK Working Day															Divert existing DN500 from MH 17 to MH 19 and removal of D300 pvc pipe at Wan Shiing Street		
S11-SW-1085	Demolition of existing manhole at MH4.15 location	5	5	15-Aug-17	19-Aug-17	-264	HK Working Day															Demolition of existing manhole at MH4.15 location, Demolition of existing manhole at MH4.15 location		
S11-SW-1086	Construction of manhole MH4.17 (Type I) including DN600 inlet	16	16	31-Aug-17	16-Sep-17	-261	HK Working Day															Construction of manhole MH4.17 (Type I) including DN600 inlet		
S11-SW-1087	Laying DN600 sewer pipes (near MH4.17 with 8m length approx.)	3	3	19-Aug-17	23-Aug-17	-264	HK Working Day															Laying DN600 sewer pipes (near MH4.17 with 8m length approx.), Laying DN600 sewer pipes		
S11-SW-1088	Laying DN750 sewer pipes and connection to MH4.19	27	27	19-Aug-17	16-Sep-17	-261	HK Working Day															Laying DN750 sewer pipes and connection to MH4.19		
S11-SW-1089	Backfill (300mm/layer), removal sheet piles and reinstate the pavement	27	27	23-Aug-17	20-Sep-17	-264	HK Working Day															Backfill (300mm/layer), removal sheet piles and reinstate the pavement		
S11-SW-1090	Implement TTA Stage 3	1	1	20-Sep-17	20-Sep-17	-264	HK Working Day															Implement TTA Stage 3, Implement TTA Stage 3		
S11-SW-1091	Trench excavation and shoring installation at Wan Shiing Street	12	12	21-Sep-17	04-Oct-17	-264	HK Working Day															Trench excavation and shoring installation at Wan Shiing Street		
S11-SW-1092	Laying DN600 clay pipes in the middle of mH4.15 & MH4.17 (3m approx.)	5	5	04-Oct-17	11-Oct-17	-264	HK Working Day															Laying DN600 clay pipes		
S11-SW-1094	Carry air test & CCTV to DN600 clay pipes	1	1	11-Oct-17	11-Oct-17	-264	HK Working Day															Carry air test & CCTV to DN600 clay pipes		
S11-SW-1094a	Carry air test & CCTV to DN750 pipes	1	1	12-Oct-17	12-Oct-17	-264	HK Working Day															Carry air test & CCTV to DN750 pipes		
S11-SW-1095	Backfill the trench (300mm/layer) and remove sheet piles	21	21	12-Oct-17	04-Nov-17	-264	HK Working Day															Backfill the trench (300mm/layer) and remove sheet piles		

<ul style="list-style-type: none"> ◆ Milestone ◆ Critical Milestones █ Current Works █ Critical Works █ Remaining Level of Effort 	CHUN WO - CRGL JOINT VENTURE	CEDD CONTRACT NO. HK/2009/02 WD II - Central Wanchai Bypass at Wan Chai East (Contract 2) 3-MONTH ROLLING PROGRAMME (data date 20-Jul-17)	Date	Revision	Checked	Approved

Activity ID	Activity Name	Original Duration	Start	Finish	2017											
					May			Jun			Jul			Aug		
Total		1791d	21-Mar-13 A	10-Mar-18												
DWP-07 - (6) - Update Progress As of 20 May 17		1791d	21-Mar-13 A	10-Mar-18												
Works in KD2		93d	06-Mar-17 A	04-Jul-17												
Works in TS3-East		93d	06-Mar-17 A	04-Jul-17												
Removal of Temporary Reclamation at TS3(E)		93d	06-Mar-17 A	04-Jul-17												
TS3E Remaining Works & TS3E/TS3W, TS3E/TS2 Stitching Works		93d	06-Mar-17 A	04-Jul-17												
West Bound Tunnel (W/B)		41d	21-May-17	30-Jun-17												
Outstanding Reinforced Concrete Works		41d	21-May-17	30-Jun-17												
A6580	Joint Site Walk	5d	21-May-17	25-May-17	Joint Site Walk											
A6590	Handover Date	1d	30-Jun-17	30-Jun-17	Handover Date											
Stitching of TS2 & TS3E (5.0 m Tunnel Length for Base Slab, Roof Slab, Approx. 15 m length for OHVD)		40d	21-May-17	29-Jun-17												
A6650	TS2/TS3E OHVD (Hindrance: Falsework Erection and Rebar Lifting) - 10 days	23d	21-May-17	12-Jun-17	TS2/TS3E OHVD (Hindrance: Falsework Erection and Rebar Lifting) - 10 days											
A6660	Falsework Removal for OHVD - 7 days	7d	23-Jun-17	29-Jun-17	Falsework Removal for OHVD - 7 days											
Profile Barrier and Maintenance Walkway		8d	21-May-17	28-May-17												
A6700	Install Precast Concrete Covers on Cable Trough (2 X 90m)	8d	21-May-17	28-May-17	Install Precast Concrete Covers on Cable Trough (2 X 90m)											
East Bound Tunnel (E/B)		93d	06-Mar-17 A	04-Jul-17												
Outstanding Reinforced Concrete Works		93d	06-Mar-17 A	04-Jul-17												
A6960	Joint Site Walk	5d	29-Jun-17	03-Jul-17	Joint Site Walk											
A6970	Handover Date	1d	04-Jul-17	04-Jul-17	Handover Date											
Stitching of TS2 & TS3E (5.0 m Length for Base Slab, Roof Slab, Approx. 15 m length for OHVD)		87d	06-Mar-17 A	28-Jun-17												
A6860	TS2/TS3E OHVD (Hindrance: Falsework Erection and Rebar Lifting) - 10 days	10d	06-Mar-17 A	11-Jun-17	TS2/TS3E OHVD (Hindrance: Falsework Erection and Rebar Lifting) - 10 days											
A6870	Falsework Removal for OHVD - 7 days	7d	22-Jun-17	28-Jun-17	Falsework Removal for OHVD - 7 days											
Works in KD7		81d	23-Mar-17 A	19-Jun-17												
Works in TS3-West		81d	23-Mar-17 A	19-Jun-17												
Tunnel Structure		81d	23-Mar-17 A	19-Jun-17												
Skin Wall Removal Works between TS4/TS3W and Shaft D Closure		81d	23-Mar-17 A	19-Jun-17												
A2590	Skin Wall Removal Works between TS4/TS3W - 20 days (2nd stage) - After Tunnel Roof Slab Completion - E/B and W/B	20d	23-Mar-17 A	30-May-17 A	Skin Wall Removal Works between TS4/TS3W - 20 days (2nd stage) - After Tunnel Roof Slab Completion - E/B and W/B											
A2600	Construction of Remaining Tunnel Structure between CH. 4260.2- 4265.2 at SOL T100 for Mainline E/B, W/B, SR8	30d	10-May-17 A	19-Jun-17	Construction of Remaining Tunnel Structure between CH. 4260.2- 4265.2 at SOL T100 for Mainline E/B, W/B, SR8											
Works in KD8		127d	31-Mar-17 A	24-Aug-17												
TS3W - Remove Temporary Reclamation		127d	31-Mar-17 A	24-Aug-17												
Stage 3 - North to East Side (Bay 19 to bay 26)		16d	14-Apr-17 A	29-Apr-17 A												
North West D-wall Opening		16d	14-Apr-17 A	29-Apr-17 A												
A2730	Vertical cut at Panel DW02 to NA6 (19 nos.)	8d	14-Apr-17 A	20-Apr-17 A	NA6 (19 nos.)											
A2740	Horizontal cut at Panel DW02 to NA6 (25 nos.)	8d	21-Apr-17 A	29-Apr-17 A	cut at Panel DW02 to NA6 (25 nos.)											
Stage 4 - West & South Side (Remove Seawall Block Bay Z4-23 & 24, Excavate to -4.35mPD)		76d	31-Mar-17 A	15-Jun-17												
West Side		49d	31-Mar-17 A	22-May-17 A												
A2790	Remove seawall blocks at Bay Bay Z4-23 to Z4-24 (249 nos.)	5d	31-Mar-17 A	15-May-17 A	Remove seawall blocks at Bay Bay Z4-23 to Z4-24 (249 nos.)											
A2800	Remove filled material to -7.0mPD (West)	5d	22-Apr-17 A	22-May-17 A	Remove filled material to -7.0mPD (West)											
North East Side		48d	19-Apr-17 A	31-May-17 A												
A2810	Core D-wall cut holes at Panel W1D1 to W1D32 (128 nos.) (North Side)	14d	19-Apr-17 A	26-Apr-17 A	holes at Panel W1D1 to W1D32 (128 nos.) (North Side)											
A2820	Vertical cut at Panel W1D1 to W1D32 (96 nos.) (North Side)	16d	27-Apr-17 A	17-May-17 A	Vertical cut at Panel W1D1 to W1D32 (96 nos.) (North Side)											
A2830	Horizontal cut at Panel W1D1 to W1D32 (128 nos.) (North Side)	20d	06-May-17 A	31-May-17 A	Horizontal cut at Panel W1D1 to W1D32 (128 nos.) (North Side)											
East Side		64d	20-Apr-17 A	31-May-17 A												

- Actual Work
- Remaining Work
- Critical Remaining Work
- ◆ Milestone

Date	Revision	Checked	Approved
20-May-17	DWP-07 (6) - 3 Months Rolling	FS	TL

Activity ID	Activity Name	Original Duration	Start	Finish	2017			
					May	Jun	Jul	Aug
A2840	Core D-wall cut holes at Panel TZ31 to TZ38 (32 nos.) (East Side)	10d	20-Apr-17 A	26-Apr-17 A	Core D-wall cut holes at Panel TZ31 to TZ38 (32 nos.) (East Side)			
A2850	Vertical cut at Panel TZ31 to TZ38 (24 nos.) (East Side)	9d	11-May-17 A	24-May-17 A	Vertical cut at Panel TZ31 to TZ38 (24 nos.) (East Side)			
A2860	Horizontal cut at Panel TZ31 to TZ38 (32 nos.) (East Side)	10d	23-May-17 A	31-May-17 A	Horizontal cut at Panel TZ31 to TZ38 (32 nos.) (East Side)			
South Side		30d	12-May-17 A	15-Jun-17				
A2870	Remove filled material to -4.35mPD (41,300m3)	30d	12-May-17 A	15-Jun-17	Remove filled material to -4.35mPD (41,300m3)			
Stage 5 - West & South side (Reeve Seawall Block Bay 24 7 25, Excavate to -7.0mPD)		44d	26-Apr-17 A	03-Jul-17				
A2920	Vertical cut at Panel BWD2 to BWD9 (22 nos.) (West Side)	8d	26-Apr-17 A	02-May-17 A	Vertical cut at Panel BWD2 to BWD9 (22 nos.) (West Side)			
A2930	Horizontal cut at Panel BWD2 to BWD9 (29 nos.) (West Side)	8d	06-May-17 A	21-May-17 A	Horizontal cut at Panel BWD2 to BWD9 (29 nos.) (West Side)			
A2880	Remove seawall blocks at Bay 24, 25 (264 nos.) (South West)	6d	21-May-17 A	21-Jun-17	Remove seawall blocks at Bay 24, 25 (264 nos.) (South West)			
A2890	Remove seawall blocks at Bay 2 to 4 (550 nos.) (South East)	11d	16-Jun-17	26-Jun-17	Remove seawall blocks at Bay 2 to 4 (550 nos.) (South East)			
A2900	Remove filled material to -7.0mPD (South)	7d	27-Jun-17	03-Jul-17	Remove filled material to -7.0mPD (South)			
Stage 6 - West & South Side (Saw Cut D-wall + Shaft D)		70d	12-Apr-17 A	27-Jul-17				
A2950	Core D-wall cut holes at Panel W2D1 to W2D18 (72 nos.) (South West)	9d	12-Apr-17 A	04-Jul-17	Core D-wall cut holes at Panel W2D1 to W2D18 (72 nos.) (South West)			
A2940	Remove fill material to -7.0mPD around shaft D	5d	23-Apr-17 A	26-Apr-17 A	Remove fill material to -7.0mPD around shaft D			
A2960	Vertical cut at Panel W2D1 to W2D18 (54 nos.) (South West)	18d	26-Apr-17 A	04-Jul-17	Vertical cut at Panel W2D1 to W2D18 (54 nos.) (South West)			
A2970	Horizontal cut at Panel W2D1 to W2D18 (72 nos.) (South West)	18d	04-Jul-17	21-Jul-17	Horizontal cut at Panel W2D1 to W2D18 (72 nos.) (South West)			
A2980	Core D-wall cut holes at Panel W2D23 to W2D34 (50 nos.) (South East)	10d	04-Jul-17	13-Jul-17	Core D-wall cut holes at Panel W2D23 to W2D34 (50 nos.) (South East)			
A2990	Vertical cut at Panel W2D23 to W2D34 (38 nos.) (South East)	13d	08-Jul-17	20-Jul-17	Vertical cut at Panel W2D23 to W2D34 (38 nos.) (South East)			
A3000	Horizontal cut at Panel W2D23 to W2D34 (50 nos.) (South East)	13d	15-Jul-17	27-Jul-17	Horizontal cut at Panel W2D23 to W2D34 (50 nos.) (South East)			
Stage 7 - West & South Side (Saw Cut Shaft D, Excavate to -7.0mPD at SR8)		70d	26-Apr-17 A	03-Aug-17				
A3010	Vertical cut at Shaft D (14 nos.)	10d	26-Apr-17 A	30-Apr-17 A	Vertical cut at Shaft D (14 nos.)			
A3020	Horizontal cut at Shaft D (14 nos.)	5d	28-Apr-17 A	04-May-17 A	Horizontal cut at Shaft D (14 nos.)			
A3030	Remove filled material to -7.0mPD at SR8	7d	28-Jul-17	03-Aug-17	Remove filled material to -7.0mPD at SR8			
Stage 8 - South East & West Side (Remove Seawall Block Bay Z4-22 to Bay 23, Saw Cut D-wall at SR8)		96d	21-May-17	24-Aug-17				
South West Side		42d	21-May-17	01-Jul-17				
A3040	Remove seawall blocks at Bay Z4-22 to Bay 23 (741 nos.)	15d	21-May-17	04-Jun-17	Remove seawall blocks at Bay Z4-22 to Bay 23 (741 nos.)			
A3050	Remove filled material to -7.0mPD (South West)	8d	05-Jun-17	12-Jun-17	Remove filled material to -7.0mPD (South West)			
A3060	Vertical cut at Panel BWD10 to SA7 (26 nos.) (South West)	9d	13-Jun-17	21-Jun-17	Vertical cut at Panel BWD10 to SA7 (26 nos.) (South West)			
A3070	Horizontal cut at Panel BWD10 to SA7 (37 nos.) (South West)	10d	22-Jun-17	01-Jul-17	Horizontal cut at Panel BWD10 to SA7 (37 nos.) (South West)			
SR08 - West Wall		21d	04-Aug-17	24-Aug-17				
A3080	Vertical cut at Panel W4D1 to W4D11 (28 nos.) (SR8)	10d	04-Aug-17	13-Aug-17	Vertical cut at Panel W4D1 to W4D11 (28 nos.) (SR8)			
A3090	Horizontal cut at Panel W4D1 to W4D11 (39 nos.) (SR8)	11d	14-Aug-17	24-Aug-17	Horizontal cut at Panel W4D1 to W4D11 (39 nos.) (SR8)			
SR08 - East Wall		19d	04-Aug-17	22-Aug-17				
A7010	Vertical cut at Panel W4D1 to W4D11 (26 nos.)	9d	04-Aug-17	12-Aug-17	Vertical cut at Panel W4D1 to W4D11 (26 nos.)			
A7020	Horizontal cut at Panel W3D1 to W3D7 (36 nos.)	10d	13-Aug-17	22-Aug-17	Horizontal cut at Panel W3D1 to W3D7 (36 nos.)			
Works in KD6		225d	22-Jan-17 A	15-Jul-17				
Works in SR8 (Open Cut Method)		225d	22-Jan-17 A	15-Jul-17				
SR8 (Zone C) - Ch. 528 to Ch. 368		177d	23-Mar-17 A	05-Jun-17				
Zone C - Tunnel Structure		177d	23-Mar-17 A	05-Jun-17				
200mm Thick OHVD Slab & 400mm Thick Hanger Wall		9d	21-May-17	29-May-17				
Bay C6		9d	21-May-17	29-May-17				
A7570	C6 - Construct OHVD Slab & Hanger Wall	9d	21-May-17	29-May-17	C6 - Construct OHVD Slab & Hanger Wall			
1.2m Thick Roof Slab		9d	23-Mar-17 A	16-May-17 A				
Bay C6		9d	23-Mar-17 A	16-May-17 A				

Activity ID	Activity Name	Original Duration	Start	Finish	2017			
					May	Jun	Jul	Aug
A7630	C6 - Partial Roof + Up Stand Wall Construction for Access Shaft	9d	23-Mar-17 A	16-May-17 A	C6 - Partial Roof + Up Stand Wall Construction for Access Shaft			
Removal of Roof Falsework - 10 days Curing		4d	23-May-17 A	27-May-17 A				
A7680	C6 - Removal of Falsework of Roof slab	4d	23-May-17 A	27-May-17 A	C6 - Removal of Falsework of Roof slab			
Egress Passage - EP01		14d	06-Apr-17 A	24-Apr-17 A				
Bay C3		14d	06-Apr-17 A	24-Apr-17 A				
A8030	C3 - Dismantle Scaffolding of EP01 Roof Slab - 10 days Curing	14d	06-Apr-17 A	24-Apr-17 A	Dismantling of EP01 Roof Slab - 10 days Curing			
Bay C4		14d	06-Apr-17 A	24-Apr-17 A				
A8040	C4 - Dismantle Scaffolding of EP01 Roof Slab - 10 days Curing	14d	06-Apr-17 A	24-Apr-17 A	Dismantling of EP01 Roof Slab - 10 days Curing			
Utility Trough		16d	21-May-17	05-Jun-17				
Bay C1		16d	21-May-17	05-Jun-17				
A7790	RHS / C1 - Backing Concrete	4d	21-May-17	24-May-17	RHS / C1 - Backing Concrete			
A7800	RHS / C1 - Profile Barrier	4d	25-May-17	28-May-17	RHS / C1 - Profile Barrier			
A7770	LHS / C1 - Backing Concrete	4d	29-May-17	01-Jun-17	LHS / C1 - Backing Concrete			
A7780	LHS / C1 - Profile Barrier	4d	02-Jun-17	05-Jun-17	LHS / C1 - Profile Barrier			
Bay C2		16d	21-May-17	05-Jun-17				
A7830	RHS / C2 - Backing Concrete	4d	21-May-17	24-May-17	RHS / C2 - Backing Concrete			
A7840	RHS / C2 - Profile Barrier	4d	25-May-17	28-May-17	RHS / C2 - Profile Barrier			
A7810	LHS / C2 - Backing Concrete	4d	29-May-17	01-Jun-17	LHS / C2 - Backing Concrete			
A7820	LHS / C2 - Profile Barrier	4d	02-Jun-17	05-Jun-17	LHS / C2 - Profile Barrier			
Bay C3		16d	21-May-17	05-Jun-17				
A7870	RHS / C3 - Backing Concrete	4d	21-May-17	24-May-17	RHS / C3 - Backing Concrete			
A7880	RHS / C3 - Profile Barrier	4d	25-May-17	28-May-17	RHS / C3 - Profile Barrier			
A7850	LHS / C3 - Backing Concrete	4d	29-May-17	01-Jun-17	LHS / C3 - Backing Concrete			
A7860	LHS / C3 - Profile Barrier	4d	02-Jun-17	05-Jun-17	LHS / C3 - Profile Barrier			
Bay C4		16d	21-May-17	05-Jun-17				
A7910	RHS / C4 - Backing Concrete	4d	21-May-17	24-May-17	RHS / C4 - Backing Concrete			
A7920	RHS / C4 - Profile Barrier	4d	25-May-17	28-May-17	RHS / C4 - Profile Barrier			
A7890	LHS / C4 - Backing Concrete	4d	29-May-17	01-Jun-17	LHS / C4 - Backing Concrete			
A7900	LHS / C4 - Profile Barrier	4d	02-Jun-17	05-Jun-17	LHS / C4 - Profile Barrier			
Bay C5		16d	21-May-17	05-Jun-17				
A7950	RHS / C5 - Backing Concrete	4d	21-May-17	24-May-17	RHS / C5 - Backing Concrete			
A7960	RHS / C5 - Profile Barrier	4d	25-May-17	28-May-17	RHS / C5 - Profile Barrier			
A7930	LHS / C5 - Backing Concrete	4d	29-May-17	01-Jun-17	LHS / C5 - Backing Concrete			
A7940	LHS / C5 - Profile Barrier	4d	02-Jun-17	05-Jun-17	LHS / C5 - Profile Barrier			
SR8 (Zone B) - Ch.385.000 to Ch.317.500 - (Inside Victoria Park to Tunnel Portal)		56d	09-May-17 A	15-Jul-17				
SR8 (Zone B) Tunnel - ELS / CCT / BF Works (7 Bays Ch. 385.000 to Ch.317.500)		56d	09-May-17 A	15-Jul-17				
Portal Structure		56d	09-May-17 A	15-Jul-17				
OHVD		23d	09-May-17 A	12-Jun-17				
Bay B1 + B2 (CH338.625 to CH368)		23d	09-May-17 A	12-Jun-17				
SR8_ZB_1390	Zone B - OHVD - Erect Scaffolding & Soffit Formwork	6d	09-May-17 A	15-May-17 A	Zone B - OHVD - Erect Scaffolding & Soffit Formwork			
SR8_ZB_1400	Zone B - Redrill & Install Rebar on Soffit of Roof Slab	10d	16-May-17 A	25-May-17 A	Zone B - Redrill & Install Rebar on Soffit of Roof Slab			
SR8_ZB_1440	Zone B - OHVD Place Concrete to OHVD Slab & Wall	1d	24-May-17	24-May-17	Zone B - OHVD Place Concrete to OHVD Slab & Wall			
SR8_ZB_1450	Zone B - OHVD Curing Period for OHVD Slab	10d	25-May-17	06-Jun-17	Zone B - OHVD Curing Period for OHVD Slab			
SR8_ZB_1420	Zone B - OHVD - Rebar Fixing for Slab & Hanger Wall of OHVD	4d	26-May-17 A	30-May-17 A	Zone B - OHVD - Rebar Fixing for Slab & Hanger Wall of OHVD			

- Actual Work
- Remaining Work
- Critical Remaining Work
- ◆ Milestone

Date	Revision	Checked	Approved
20-May-17	DWP-07 (6) - 3 Months Rolling	FS	TL

Activity ID	Activity Name	Original Duration	Start	Finish	2017			
					May	Jun	Jul	Aug
SR8_ZB_1430	Zone B - OHVD Erect Hanger Wall Formwork for OHVD	2d	31-May-17 A	23-May-17				
SR8_ZB_1460	Zone B - OHVD Remove Soffit Formwork & Scaffolding	5d	07-Jun-17	12-Jun-17				
Utility Trough		28d	13-Jun-17	15-Jul-17				
Left Hand Side		21d	21-Jun-17	15-Jul-17				
SR8_ZB_1570	Zone B - U trough (LHS) Bay 3	7d	21-Jun-17	28-Jun-17				
SR8_ZB_1560	Zone B - U trough (LHS) Bay 2	7d	29-Jun-17	07-Jul-17				
SR8_ZB_1550	Zone B - U trough (LHS) Bay 1	7d	08-Jul-17	15-Jul-17				
Right Hand Side		21d	13-Jun-17	07-Jul-17				
SR8_ZB_1600	Zone B - U trough (RHS) Bay 3	7d	13-Jun-17	20-Jun-17				
SR8_ZB_1590	Zone B - U trough (RHS) Bay 2	7d	21-Jun-17	28-Jun-17				
SR8_ZB_1580	Zone B - U trough (RHS) Bay 1	7d	29-Jun-17	07-Jul-17				
Pump House		52d	21-May-17	11-Jul-17				
Remining Works inside Pump Sump E		52d	21-May-17	11-Jul-17				
SR8_ZB_1890	Steel Works Installation inside Pump Sump E	45d	21-May-17	04-Jul-17				
SR8_ZB_1900	Installation Manhole Covers for Pump Sump E	7d	05-Jul-17	11-Jul-17				
SR8 (Zone A) - Ch 317.500 to Ch 210.000 - U-Structure & Slab (Victoria Park)		28d	22-Jan-17 A	26-Jun-17				
RC CCT & Backfill Ch317.5000 to Ch240.000		28d	22-Jan-17 A	26-Jun-17				
Structure		28d	22-Jan-17 A	26-Jun-17				
Utility Through		28d	22-Jan-17 A	26-Jun-17				
SR8_ZA_1260	Zone A - Utility Trough for Zone A (CH240 to CH317)	28d	22-Jan-17 A	26-Jun-17				
Works in KD9 (Include Re-provisioning Works of KD4,KD5)		330d	12-Dec-16 A	12-Oct-17				
External Works Under KD9		330d	12-Dec-16 A	12-Oct-17				
Tsing Fung St - RW & Subway Extension & Toe Wall at Hing Fat St		172d	01-Mar-17 A	07-Sep-17				
Retaining Wall + Toe Wall at Hing Fat Street		172d	01-Mar-17 A	07-Sep-17				
Retaining Wall RW8D		58d	01-Mar-17 A	02-Jun-17				
Works along RW8D During Reopen Hing Fat Street Footpath to Public		58d	01-Mar-17 A	02-Jun-17				
A4910	Close slow lane of HFS to cut coping of RW8D and subway	20d	01-Mar-17 A	26-Apr-17 A				
A4920	Lay temp bituminous pavement for road diversion (from RW8D to Subway)	3d	22-May-17	24-May-17				
A4940	Install steel vehicle parapet on RW8C, subway and RW8D	10d	22-May-17	02-Jun-17				
Retaining Walls RW8E, Sign Footings & Sewer Pipe (SK266G, SK539C, SK375B)		127d	19-Apr-17 A	07-Sep-17				
A4620	Excavate and lay blinding layer of RW8E (Including ELS)	14d	19-Apr-17 A	15-May-17 A				
A4650	MH2-70 to MH2-71 (150 dia. foul sewer pipe)	12d	02-May-17 A	13-May-17 A				
A4670	MH2-72 to MH2-73	12d	15-May-17 A	27-May-17 A				
A4630	Construction of RW8E and toe wall (2+1 bays, 32m long)	45d	16-May-17 A	27-Jun-17				
A4880	DS16 - Sign Frame Installation	14d	21-May-17	03-Jun-17				
A4640	Backfill and subsoil drainage system behind RW8E	14d	28-Jun-17	14-Jul-17				
A4680	MH 2-73 to Extg MH (on footpath)	12d	15-Jul-17	28-Jul-17				
A4690	OHVD and 5m CCTV high mast footing on footpath	14d	29-Jul-17	14-Aug-17				
A4900	TCSS Drawpit and ducts	21d	15-Aug-17	07-Sep-17				
Storm Drain Pipe behind RW8C along Tsing Fung Street (SK547A)		28d	15-May-17 A	23-Jun-17				
A4540	Modified MH shaft A2 at extg box culvert near MH TFS-04A	14d	15-May-17 A	30-May-17 A				
A6410	MHTFS-06 to extg MH A3 (at slow lane of TFS)	14d	22-May-17	07-Jun-17				
A8050	MHTFS-05 to extg MH A3 (gully)	14d	08-Jun-17	23-Jun-17				
Sign Footings at Victoria Park		75d	22-May-17	18-Aug-17				

Activity ID	Activity Name	Original Duration	Start	Finish	2017			
					May	Jun	Jul	Aug
A4570	Construction of 5m CCTV, AID, OHVD, TSG, luminance meter at verge inside VP	60d	22-May-17*	01-Aug-17				Construction of 5m CCTV, AID, OHVD, TSG,
A4580	All drawpits (ATC, E&M and lighting) and ductings at verge inside VP (SK375B)	60d	09-Jun-17	18-Aug-17				All drawpits (
Boundary Fence, Type 2 Railing Footings & Fence Wall From RW8C to Zone B		267d	12-Dec-16 A	12-Oct-17				
A8070	Fence wall between BGO and Zone A (78.2m)	90d	12-Dec-16 A	01-Aug-17				Fence wall between BGO and Zone A (78.2m)
A4700	Construction of boundary fence from RW8C toe wall to 15m CCTV high mast (approx. 53m)	50d	19-Dec-16 A	20-Jun-17				Construction of boundary fence from RW8C toe wall to 15m CCTV high mast (approx. 53m)
A4710	Modification/ Re-construction of extg type 2 railing footing in front of RW8C (approx. 40m)	60d	10-Feb-17 A	30-Aug-17				
A4720	Construction of boundary fence from 15m CCTV high mast to Zone A at CH210 (approx. 50m)	50d	21-Jun-17	18-Aug-17				Construction
A4730	Construction of boundary fence near nursery compound (approx. 167m, after completion of MH 2-73)	90d	27-Jun-17	12-Oct-17				
Other Storm, Sewerage Pipe & Irrigation System in VP (SK336E, SK539D)		170d	21-Feb-17 A	05-Sep-17				
A4770	MH2-71 to TFS-06 via MH2-72 and MH 2-73 (300 dia. concrete pipe)	40d	21-Feb-17 A	26-Jun-17				MH2-71 to TFS-06 via MH2-72 and MH 2-73 (300 dia. concrete pipe)
A4740	FMH-B01 to Extg 1-40 (5 MHs and 7 foul sewer PE pipeline)	90d	22-May-17	05-Sep-17				
A4970	Irrigation Main Laying	14d	27-Jun-17	10-Jul-17				Irrigation Main Laying
A4760	MHB (beside pump sump E) to MH2-70 (300 dia. stormwater pipeline)	14d	27-Jun-17	13-Jul-17				MHB (beside pump sump E) to MH2-70 (300 dia. stormwater pipeline)
A4980	Water Points Installation	14d	11-Jul-17	24-Jul-17				Water Points Installation
Preparation Works before Implementation TTA at Central Median		172d	02-Feb-17 A	20-Aug-17				
A4795	Excavate to formation level and lay subbase, fix K1 kerb along TFS	14d	02-Feb-17 A	05-Jun-17				Excavate to formation level and lay subbase, fix K1 kerb along TFS
A4890	Laying Ducting Cross Access Ramp Down to Zone C SR8 Tunnel	60d	21-May-17	19-Jul-17				Laying Ducting Cross Access Ramp Down to Zone C SR8 Tunnel
A4930	Shifting Site Entrance 6A	4d	20-Jul-17	23-Jul-17				Shifting Site Entrance 6A
A4950	Laying Ducting in New SR8 Approaching Island	14d	24-Jul-17	06-Aug-17				Laying Ducting in New SR8 Approach
A5020	Forming Island Including Sub-base & Kerbing	14d	07-Aug-17	20-Aug-17				Forming
Reverting Traffic for IEC, VP Rd & TF St & Seawall Reinstatement (KD9)		109d	27-Mar-17 A	27-Aug-17				
TTA Revert Traffic Back to Original Alignment		109d	27-Mar-17 A	27-Aug-17				
Preparation Works - Backfill of Zone C to Top of Tunnel Structure		56d	27-Mar-17 A	10-Jun-17				
A5790	Waterproofing & Screeding to Roof	4d	27-Mar-17 A	22-May-17 A				Waterproofing & Screeding to Roof
A5800	Load Transfer for King Post	6d	05-Apr-17 A	25-May-17 A				Load Transfer for King Post
A5820	Zone C - Bay C1 to C5 Backfill to Formation & Remove Struts SL1 to SL3 (Up to +2.5mPD)	44d	10-Apr-17 A	10-Jun-17				Zone C - Bay C1 to C5 Backfill to Formation & Remove Struts SL1 to SL3 (Up to +2.5mPD)
A5780	Curing to Roof Slab of Zone C	3d	17-May-17 A	19-May-17 A				Curing to Roof Slab of Zone C
A5810	Make Good Box-out Left by King Post	2d	26-May-17 A	27-May-17 A				Make Good Box-out Left by King Post
East Bound TTA - IEC East Bound, Victoria Park Road & Footpath along Sea Side		78d	11-Jun-17	27-Aug-17				
Stage 1 - IEC (East Bound)		36d	11-Jun-17	16-Jul-17				
A5240	IEC/EB - Construct Footing of Sign Gantry & Wing Wall	17d	11-Jun-17	27-Jun-17				IEC/EB - Construct Footing of Sign Gantry & Wing Wall
A5260	IEC/EB - Backfill to Formation Level (Approx. 2.2mPD to +3.9mPD)	5d	11-Jun-17	15-Jun-17				IEC/EB - Backfill to Formation Level (Approx. 2.2mPD to +3.9mPD)
A5270	IEC/EB - Reconstruct Wing Wall of Abutment M (approx. 6m)	10d	11-Jun-17	20-Jun-17				IEC/EB - Reconstruct Wing Wall of Abutment M (approx. 6m)
A5280	IEC/EB - Cast Central Median	21d	11-Jun-17	01-Jul-17				IEC/EB - Cast Central Median
A5310	IEC/EB - Remove Temporary Utilities Supports at IEC	3d	11-Jun-17	13-Jun-17				IEC/EB - Remove Temporary Utilities Supports at IEC
A3285	IEC/EB - Cut and Remove Pipe Pile (2m Below Ground Level)	7d	11-Jun-17	17-Jun-17				IEC/EB - Cut and Remove Pipe Pile (2m Below Ground Level)
A5320	IEC/EB - Reinstale Existing Drainage System	14d	14-Jun-17	27-Jun-17				IEC/EB - Reinstale Existing Drainage System
A3286	IEC/EB - Cut and Remove Sheet Pile (2m Below Ground Level)	7d	18-Jun-17	24-Jun-17				IEC/EB - Cut and Remove Sheet Pile (2m Below Ground Level)
A5290	IEC/EB - Street Lighting Cable Duct & Poles	3d	25-Jun-17	27-Jun-17				IEC/EB - Street Lighting Cable Duct & Poles
A5250	IEC/EB - Install A Frame of Sign Gantry	4d	28-Jun-17	01-Jul-17				IEC/EB - Install A Frame of Sign Gantry
A5300	IEC/EB - TOC of Street Lightings	2d	28-Jun-17	29-Jun-17				IEC/EB - TOC of Street Lightings
A5330	IEC/EB - Backfill Drainage Trench Up to Formation (+2.5mPd to +3.9mPD)	5d	28-Jun-17	02-Jul-17				IEC/EB - Backfill Drainage Trench Up to Formation (+2.5mPd to +3.9mPD)
A5340	IEC/EB - Laying Sub-base	2d	03-Jul-17	04-Jul-17				IEC/EB - Laying Sub-base
A5350	IEC/EB - Laying Asphalt Pavement	3d	05-Jul-17	07-Jul-17				IEC/EB - Laying Asphalt Pavement

Activity ID	Activity Name	Original Duration	Start	Finish	2017			
					May	Jun	Jul	Aug
A5360	IEC/EB - Road Mark & Traffic Signs	3d	08-Jul-17	10-Jul-17			■ IEC/EB - Road Mark & Traffic Signs	
A5370	IEC/EB - Implement TTA to Divert Traffic to IEC East Bound	1d	16-Jul-17	16-Jul-17			■ IEC/EB - Implement TTA to Divert Traffic to IEC East Bound	
Stage 2 - Vitoria Park Road		35d	24-Jul-17	27-Aug-17				
A5380	VP Road - Remove Ligth Weight Concrete Ramp	21d	24-Jul-17	13-Aug-17			■ VP Road - Remove Lig	
A5390	VP Road - Reinstate Pararpet Wall of IEC Bridge	35d	24-Jul-17	27-Aug-17			■ VP Road - Reinstate Pararpet Wall of IEC Bridge	
A5400	VP Road - Traffic Deck & Footing Removal	14d	24-Jul-17	06-Aug-17			■ VP Road - Traffic Deck; & Footing R	
A5410	VP Road - Cut Pipe Piles	7d	07-Aug-17	13-Aug-17			■ VP Road - Cut Pipe Pili	
A5420	VP Road - Cut Sheet Piles	7d	14-Aug-17	20-Aug-17			■ VP Road	
West Bound - IEC West Bound & Tsing Fung Street		78d	11-Jun-17	27-Aug-17				
Stage 1 - IEC (West Bound)		36d	11-Jun-17	16-Jul-17				
A5690	IEC/WB - Cut pipe pile - 1 week	7d	11-Jun-17	17-Jun-17	■ IEC/WB - Cut pipe pile - 1 week			
A5710	IEC/WB - Removal of pedestrian decking	11d	11-Jun-17	21-Jun-17	■ IEC/WB - Removal of pedestrian decking			
A3785	IEC/WB - Reconstruct Wing Wall of Abutment M (approx. 6m)	10d	11-Jun-17	20-Jun-17	■ IEC/WB - Reconstruct Wing Wall of Abutment M (approx. 6m)			
A5700	IEC/WB - Cut sheetpile - 1 week	7d	18-Jun-17	24-Jun-17	■ IEC/WB - Cut sheetpile - 1 week			
A5720	IEC/WB - Remove temporary utilities support 3 days	3d	22-Jun-17	24-Jun-17	■ IEC/WB - Remove temporary utilities support 3 days			
A5730	IEC/WB - Backfill up to Formation under Asphalt (from +2.5mPD to +3.9mPD) 5 days	5d	25-Jun-17	29-Jun-17	■ IEC/WB - Backfill up to Formation under Asphalt (from +2.5mPD to +3.9mPD) 5 days			
A5740	IEC/WB - Subbase Laying 2 days	2d	30-Jun-17	01-Jul-17	■ IEC/WB - Subbase Laying 2 days			
A5750	IEC/WB - Asphalt (Road Base, Base Course, Wearing Course) 5 days	5d	02-Jul-17	06-Jul-17	■ IEC/WB - Asphalt (Road Base, Base Course, Wearing Course) 5 days			
A5760	IEC/WB - Road Marking/Traffic Sign 3 days	3d	07-Jul-17	09-Jul-17	■ IEC/WB - Road Marking/Traffic Sign 3 days			
A5840	IEC/WB - Implement TTM	1d	16-Jul-17	16-Jul-17	■ IEC/WB - Implement TTM			
Stage 2 - Tsing Fung Street		42d	17-Jul-17	27-Aug-17				
A5850	Decking /Footing Removal - 2 weeks	14d	17-Jul-17	30-Jul-17			■ Decking /Footing Removal - 2 weeks	
A5880	Light Weight Conc. Ramp Rem. 4 weeks	28d	17-Jul-17	13-Aug-17			■ Light Weight Conc. Ra	
A5890	Trench Excavation for Towngas - 4 weeks	28d	17-Jul-17	13-Aug-17			■ Trench Excavation for	
A5860	Cut pipe pile - 1 week	7d	31-Jul-17	06-Aug-17			■ Cut pipe pile - 1 week	
A5870	Cut sheetpile - 1 week	7d	07-Aug-17	13-Aug-17			■ Cut sheetpile - 1 week	
A5900	Diversion ofTowngas at TFS - 3 weeks	21d	07-Aug-17	27-Aug-17			■ Diversion ofTowngas at TFS - 3 weeks	
A5910	Backfill up to Formation (from +2.5mPD to +3.9mPD) 5 days	5d	14-Aug-17	18-Aug-17			■ Backfill up to	
A5920	Installation of Cross Road Duct of street lighting - 3 days	3d	14-Aug-17	16-Aug-17			■ Installation of Cr	
A5930	K1 kerb installation - 1 week	7d	19-Aug-17	25-Aug-17			■ K1 kerb installation - 1 week	
Reinstatement Existing Slopping & Vertical Sea Wall		55d	11-Jun-17	04-Aug-17				
Major Reinstatement Works for Seawall Reinstatement		55d	11-Jun-17	04-Aug-17				
Stage 1 - Removal of Remaining Pipe Pile Wall, Sheet Pile Wall & D-wall		55d	11-Jun-17	04-Aug-17				
A7030	Backfill upto +2.5mPD at all bay of SR8	1d	11-Jun-17	11-Jun-17	■ Backfill upto +2.5mPD at all bay of SR8			
A7040	Cut pipe pile wall at A1 - A14	14d	12-Jun-17	25-Jun-17	■ Cut pipe pile wall at A1 - A14			
A7050	Under water cut sheet pile wall (36 nos.)	40d	26-Jun-17	04-Aug-17			■ Under water cut sheet pile wall (36 nos.)	
Works in Victoria Park (KD4, KD5, KD9)		184d	20-Jan-17 A	29-Aug-17				
Re-Provisioning Works		184d	20-Jan-17 A	29-Aug-17				
Nursery Compound		184d	20-Jan-17 A	29-Aug-17				
Submission		123d	20-Jan-17 A	26-Jun-17				
ABWF Submission		76d	03-Feb-17 A	10-May-17 A				
Material		21d	19-Apr-17 A	10-May-17 A				
VP_NC_1070	ABWF Material Delivery	21d	19-Apr-17 A	10-May-17 A	■ ABWF Material Delivery			
Shop Drawing		14d	03-Feb-17 A	03-May-17 A				

Activity ID	Activity Name	Original Duration	Start	Finish	2017			
					May	Jun	Jul	Aug
VP_NC_1090	ABWF Shop Drawing - ER Review and Approval	14d	03-Feb-17 A	03-May-17 A	ABWF Shop Drawing - ER Review and Approval			
E&M Submission		123d	20-Jan-17 A	26-Jun-17				
Material		123d	20-Jan-17 A	26-Jun-17				
VP_NC_1140	E&M Issue P.O. / Manufacturing / Fabrication	15d	20-Jan-17 A	21-May-17 A	E&M Issue P.O. / Manufacturing / Fabrication			
VP_NC_1150	E&M Materail Delivery	30d	22-May-17	26-Jun-17	E&M Materail Delivery			
Shop Drawing		30d	08-May-17 A	19-Jun-17				
VP_NC_1170	E&M Shop Drawing - ER Review and Approval	30d	08-May-17 A	19-Jun-17	E&M Shop Drawing - ER Review and Approval			
Nursery compound		60d	05-Apr-17 A	29-Aug-17				
A4420	ABWF, Plumbing Works, waterproofing and E&M works	60d	05-Apr-17 A	12-Aug-17	ABWF, Plumbing Worl			
A4470	Lay CWP, FWP and FSP inside NC (inspection by WSD & FSD)	45d	08-Jul-17	29-Aug-17				
KD11, KD12, KD13, KD18 Establishment Works for Landscape Softworks		1087d	23-Feb-15 A	10-Mar-18				
KD11 - Section 7A: Portion XIV & XV (Victoria Park Open Space)		885d	23-Feb-15 A	10-Mar-18				
EW_1000	Establishment Works - for Landscape Softworks and transplanted trees in Portion XIV & XV	901d	23-Feb-15 A	10-Mar-18				
KD12 - Section 7B: Portion VI & VII (Reprov. Bowling Green Area)		177d	03-Dec-15 A	22-May-17				
EW_1010	Establishment Works - for Landscape Softworks and transplanted trees in Portion VI & VII	177d	03-Dec-15 A	22-May-17	Establishment Works - for Landscape Softworks and transplanted trees in Portion VI & VII			
KD10 - Preservation and Protection of Trees		1088d	21-Mar-13 A	22-May-17				
PPT_0000	Preservation and Protection of Existing Trees	1088d	21-Mar-13 A	22-May-17	Preservation and Protection of Existing Trees			
KD15 & KD8 - Mooring Components Upkeep (CBTS and ATS)		980d	15-May-14 A	22-May-17				
MAR_3020	Mooring Upkeep at Portion X(10) & XVI(16) - CBTS	979d	15-May-14 A	22-May-17	Mooring Upkeep at Portion X(10) & XVI(16) - CBTS			
Works for Public Works Regional Laboratory (North Lantau) - KD1, KD16, KD17		1301d	19-Jul-13 A	21-Nov-17				
KD17 - Maintenance and Upkeep of New PWRL (Portion XVII)		1301d	19-Jul-13 A	21-Nov-17				
PWRL_1050	Maintenance/ Upkeep of New PWRL	1301d	19-Jul-13 A	21-Nov-17				



Activity ID	Activity Name	Remaining Dur	Early Start	Early Finish	Activity % Complete	2017					
						Jun	Jul	Aug	Sep	Oct	
HK/2012/08 Revised Works Programme Rev.11(DD 30 Jun 2017)											
Works for Section Completion											
Construction											
CWB Tunnel & Slip Road Structures and Facilities											
CWB D - Slip Road 1 - Trough / Retaining Wall											
CWB D - Slip Road 1 - Trough/Retaining Wall Structure											
SIIA12708	Sec II A - CWB SR1 Trough & RW: Trough Structure bay 3: Construct wall	11	15-Jun-17 A	10-Jul-17	26.67%						
SIIA12712	Sec II A - CWB SR1 Trough & RW: Trough Structure bay 2: Construct Wall & curing	37	11-Jul-17	16-Aug-17	0%						
SIIA12732	Sec II A - CWB SR1 Trough & RW: Trough Structure bay 2 & 3: waterproofing	6	17-Aug-17	22-Aug-17	0%						
SIIA12752	Sec II A - CWB SR1 Trough & RW: Trough Structure bay 2 & 3: construct box out area & backfilling	28	23-Aug-17	19-Sep-17	0%						
SIIA12772	Sec II A - CWB SR1 Trough & RW: Trough Structure bay 2 & 3: road works	10	20-Sep-17	29-Sep-17	0%						
SIIA12800	Sec II A - CWB SR1 Trough & RW: Trough Structure bay 1b: Construct wall	31	09-Aug-17	08-Sep-17	0%						
SIIA13702	Sec II A - CWB SR1 Trough & RW: Trough Structure bay 1a: Construct wall & curing	20	09-Sep-17	28-Sep-17	0%						
SIIA13722	Sec II A - CWB SR1 Trough & RW: Trough Structure bay 1a & 1b: waterproofing	8	29-Sep-17	06-Oct-17	0%						
SIIA13800	Sec II A - CWB SR1 Trough & RW: Retaining Walls RW3 & RW4 (bay 1 base slab & wall)	23	11-Jul-17	02-Aug-17	0%						
SIIA13860	Sec II A - CWB SR1 Trough & RW: Retaining Walls RW3 & RW4 (bay 2 base slab & wall)	23	03-Aug-17	25-Aug-17	0%						
Section III A - Road A2, A4 & A5											
Roadwork & Utilities - Section 1 (L1806 - L1801)											
SIIA10280	Sec III A - roadwork and utilities section 1 carriageway - TTA Stage 4A -1: road & drainage works	8	10-Apr-17 A	10-Jul-17	84.62%						
SIIA10282	Sec III A - roadwork and utilities section 1 carriageway - TTA Stage 4A -2: road & drainage works	21	11-Jul-17	03-Aug-17	0%						
SIIA10284	Sec III A - roadwork and utilities section 1 carriageway - TTA Stage 4A -3: road & drainage works	25	04-Aug-17	01-Sep-17	0%						
Roadwork & Utilities - Section 2 (L1810 - L1806)											
SIIA12470	Sec III A - roadwork and utilities section 2 carriageway - Relocate site access & trim down D-wall	16	15-Jul-17*	02-Aug-17	0%						
SIIA12490	Sec III A - roadwork and utilities section 2 carriageway - Drainage works (L1810 - L1806, L2202 - L2202A)	61	03-Aug-17	13-Oct-17	0%						
Roadwork & Utilities - Section 3 (L1808 - L1102)											
SIIA12705	Sec III A - roadwork and utilities section 3 carriageway - Trimming down d-wall	14	03-Aug-17	18-Aug-17	0%						
SIIA12710	Sec III A - roadwork and utilities section 3 carriageway - Drainage works (L1301 - L1102)	21	19-Aug-17	12-Sep-17	0%						
SIIA12750	Sec III A - roadwork and utilities section 3 carriageway - gully pipe (L1808A - L1102)	14	13-Sep-17	28-Sep-17	0%						
SIIA12762	Sec III A - roadwork and utilities section 3 carriageway - watermain	11	29-Sep-17	12-Oct-17	0%						
Roadwork & Utilities - Section 4 (L1406 - L1401)											
SIIA12930	Sec III A - Remove pipe pile and concrete paving	8	10-Jun-17 A	10-Jul-17	82.98%						
SIIA12935	Sec III A - roadwork and utilities section 4 carriageway - Drainage works (L1406-L1401)	45	11-Jul-17	31-Aug-17	0%						
SIIA12950	Sec III A - roadwork and utilities section 4 carriageway - gully pipe (L1406 -L1401)	31	01-Sep-17	07-Oct-17	0%						
Roadwork & Utilities - Section 5 (L1411 - L1406)											
SIIA13150	Sec III A - roadwork and utilities section 5 carriageway - Drainage works (L1411 - L1406)	20	01-Jun-17 A	24-Jul-17	54.55%						

Data Date: 30-Jun-17

- ◆ Current Milestone
- Actual Work
- Critical Remaining Work
- Remaining Work
- Remaining Level of Effort

3-Months Rolling Programme for Non-CR III (July - September 2017)
(Ref. to Revised Works Programme Rev.11)

Date	Revision	Checked	Approved
10-Jul-17	11		



Activity ID	Activity Name	Remaining Dur	Early Start	Early Finish	Activity % Complete	2017				
						Jun	Jul	Aug	Sep	Oct
SIIIA13210	Sec III A - roadwork and utilities section 5 carriageway - gully pipe (L1411 - L1406)	25	25-Jul-17	22-Aug-17	0%					
SIIIA13230	Sec III A - roadwork and utilities section 5 carriageway - road formation: Crossroad duct(HEC), road kerb & formation	29	23-Aug-17	25-Sep-17	0%					
SIIIA13250	Sec III A - roadwork and utilities section 5 carriageway - black top	7	26-Sep-17	04-Oct-17	0%					
Roadwork & Utilities - Section 6 (L1102 - L1411)										
SIIIA13370	Sec III A - roadwork and utilities section 6 carriageway - Drainage works (Culvert L - L1411)	28	05-Jun-17 A	02-Aug-17	42.86%					
SIIIA13372	Sec III A - roadwork and utilities section 6 carriageway - Backfilling of water channel adjacent culvert K bay 16	14	18-Aug-17	02-Sep-17	0%					
SIIIA13373	Sec III A - roadwork and utilities section 6 carriageway - Backfilling of water channel from culvert K bay 16 to 20B	20	24-Aug-17	15-Sep-17	0%					
SIIIA13374	Sec III A - roadwork and utilities section 6 carriageway - Drainage works (L1101-L1102)	22	16-Sep-17	12-Oct-17	0%					
SIIIA13430	Sec III A - roadwork and utilities section 6 carriageway - gully pipe (Culvert L - L1411)	30	03-Aug-17	06-Sep-17	0%					
SIIIA13444	Sec III A - roadwork and utilities section 6 carriageway - watermain	7	07-Sep-17	14-Sep-17	0%					
SIIIA13445	Sec III A - roadwork and utilities section 6 carriageway - utilities: HEC, HGC, PCCW	14	15-Sep-17	30-Sep-17	0%					
Section V - Remaining At-Grade Road; Remove 2nd Stage ITA										
Roadwork & Utilities										
Section 1 (L1504 - L1900)										
SV12420	Sec V - Roadwork & Utilities Section 1 Carriageway - Drainage Works (L1905-L1906, L1504-L1503)	22	16-May-17 A	26-Jul-17	74.12%					
SV12450	Sec V - Roadwork & Utilities Section 1 Carriageway - Gully pipe (L1903 - L1906, L1501-L1504)	64	27-Jul-17	10-Oct-17	0%					
Section 2 (L1510 - L1504)										
SV12600	Sec V - Roadwork & Utilities Section 2 Carriageway - Drainage Works (L1501-L1507, L1406B-L1406A, L1611-L1609)	41	01-Jun-17 A	17-Aug-17	50%					
SV12602	Sec V - Roadwork & Utilities Section 2 Carriageway : Backfilling	7	18-Aug-17	25-Aug-17	0%					
SV12603	Sec V - Roadwork & Utilities Section 2 Carriageway - Gully pipe (L1501 - L1507 & L1611 - L1609)	30	26-Aug-17	29-Sep-17	0%					
Section 3 (Culvert L - L1504)										
SIV12762	Sec V - Roadwork & Utilities Section 3 Carriageway - Gully pipe (Culvert L - L1504)	11	08-Jun-17 A	13-Jul-17	63.33%					
SIV12765	Sec V - Roadwork & Utilities Section 3 Carriageway - Demolish D wall	25	16-Aug-17*	13-Sep-17	0%					
SIV12766	Sec V - Roadwork & Utilities Section 3 Carriageway - Drainage Works (Culvert L - L1611)	26	14-Sep-17	14-Oct-17	0%					
Section VI D - Area 8B & 10										
WDII Box 1 Construction										
WDII Box 1 ELS										
WD-C4120	Sec VIC - Joint Survey of excavated level	0	18-Oct-16 A	30-Jun-17	100%					
WDII Box 1 Remaining Structure										
SVID-6130	Sec VID - Remaining of Box I : Trimming bored pile A4 & B3 and casting	7	25-Jun-17 A	06-Jul-17	30%					
SVID-6140	Sec VID - Remaining of Box I : Construct remaining wall & roof slab	25	07-Jul-17	31-Jul-17	0%					
SVID-6220	Sec VID - Remaining of Box I : waterproofing for roof slab	5	01-Aug-17	05-Aug-17	0%					
SVID-6340	Sec VID - Box I South: Remove ELS and trimming pipe pile	5	12-Jun-17 A	04-Jul-17	68.75%					
SVID-6360	Sec VID - Box I South: Remove SIC coarse screen hood	16	05-Jul-17	20-Jul-17	0%					
SVID-6380	Sec VID - Box I South: Install pile cap & box beam	15	21-Jul-17	04-Aug-17	0%					
SVID-6620	Sec VID - Backfilling stage 1: backfill in Box I	22	05-Aug-17	26-Aug-17	0%					
SVID-6680	Sec VID - Backfilling stage 4: backfill in dry dock	30	18-Aug-17	16-Sep-17	0%					
SVID10100	Achievement of Section VID of the Works	0		26-Aug-17	0%					
Section IV - Slip Road 3										



Activity ID	Activity Name	Remaining Dur	Early Start	Early Finish	Activity % Complete	2017				
						Jun	Jul	Aug	Sep	Oct
Roadwork & Utilities										
Section 1 (L16608 - L1601)										
SIV11740	Sec IV - Re-Possion of the Area	0	24-Aug-17*		0%					
SIV11760	Sec IV - Roadwork & Utilities at SR3 Section 1 Carriageway - Drainage Works (L1607-L1601, L2004-L2005)	39	24-Aug-17	09-Oct-17	0%					
Section 2 (L2301 - L2103)										
SIV11940	Sec IV - Roadwork & Utilities at SR3 Section 2 Carriageway - Drainage Works (L2301-L2103)	21	16-Aug-17*	08-Sep-17	0%					
SIV11941	Sec IV - Roadwork & Utilities at SR3 Section 2 Carriageway - Drainage Works (L608-L1609)	30	09-Sep-17	14-Oct-17	0%					
Section 3 (M/H1.6 - L2301)										
SIV12100	Sec IV - Roadwork & Utilities at SR3 Section 3 Carriageway - Drainage Works (M/H1.7 - L2301)	31	09-Sep-17	16-Oct-17	0%					
SIV12102	Sec IV - Roadwork & Utilities at SR3 Section 3 Carriageway - M1.7-M1.6: Demolish seawall	20	16-Aug-17*	07-Sep-17	0%					
SIV12103	Sec IV - Roadwork & Utilities at SR3 Section 3 Carriageway - M1.7-M1.6: ELS	10	08-Sep-17	19-Sep-17	0%					
SIV12104	Sec IV - Roadwork & Utilities at SR3 Section 3 Carriageway - M1.7-M1.6: Construct manhole & pipes	36	20-Sep-17	02-Nov-17	0%					
SIV12138	Sec IV - Roadwork & Utilities at SR3 Section 3 Carriageway - Utilities: HEC to MVB Plant room	38	20-Jul-17*	01-Sep-17	0%					
SIV12170	Sec IV - Roadwork & Utilities at SR3 Section 3 footpath - Utilities: TCSS & HEC to MVB plant room	43	02-Sep-17	23-Oct-17	0%					
Section VII - Remainder Works										
Retaining Wall RW5 Construction										
SVII10660	Sec VII - Retaining Wall RW5 (bay 1) - construct base slab and wall	20	19-Sep-17	12-Oct-17	0%					
SVII10800	Sec VII - Retaining wall RW5 (bay 3) - construct base slab and wall	20	19-Sep-17	12-Oct-17	0%					
Promenade Seawall Parapet Construction										
SVII13100	Sec VII - Zone A1, A2 & B: Remove temporary seawall block	21	15-Aug-17*	07-Sep-17	0%					
SVII13120	Sec VII - Zone A1, A2 & B: Construct seawall block mass concrete coping	45	08-Sep-17	01-Nov-17	0%					
SVII13200	Sec VII - Zone D: Remove temporary seawall block	21	19-Sep-17	13-Oct-17	0%					
Promenade Footpath and EVA Construction										
Section 5										
SVII13270	Sec VII - section 5 footpath - drainage works (L2203 -L2204) & U channel	49	29-Aug-17	25-Oct-17	0%					
Section X - Protection & Preservation of Trees										
Soft Landscaping Works										
SX10020	Sec X - Protection & Preservation of Trees	322	31-Jan-13 A	17-May-18	80.27%					